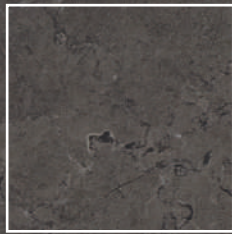
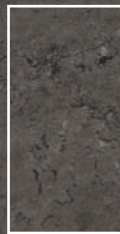


NORTHON



120x120 R
47¼"x47¼" R



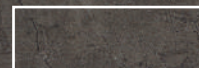
60x120 R
23¾"x47¼" R



100x100 R
40"x40" R



60x60
23¾"x23¾"



33,3x100
13¼"x40"

Northon

PORCELÁNICO ESMALTADO / GLAZED PORCELAIN TILE
ACABADO PULIDO / POLISHED FINISH

LUX

47¼"x47¼" R 120x120 R



Northon Light Grey Pul 120x120 R

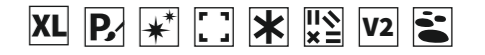


Northon

PORCELÁNICO ESMALTADO / GLAZED PORCELAIN TILE
ACABADO PULIDO / POLISHED FINISH

LUX

47¼" x 47¼" R 120x120 R



Northon Almond Pul 120x120 R

P440R

Northon Taupe Pul 120x120 R

P442R



Northon Light Grey Pul 120x120 R

P440R

Northon Grey Pul 120x120 R

P442R



Northon

PORCELÁNICO ESMALTADO / GLAZED PORCELAIN TILE
ACABADO PULIDO / POLISHED FINISH

LUX

23³/₄"x47¹/₄" R 60x120 R



Northon Grey Pul 60x120 R



Northon

PORCELÁNICO ESMALTADO / GLAZED PORCELAIN TILE
ACABADO PULIDO / POLISHED FINISH

LUX

23³/₄"x47¹/₄" R 60x120 R



Northon Almond Pul 60x120 R

P460R



Northon Light Grey Pul 60x120 R

P460R



Northon Taupe Pul 60x120 R

P462R



Northon Grey Pul 60x120 R

P462R

Northon

PORCELÁNICO ESMALTADO / GLAZED PORCELAIN TILE
ACABADO PULIDO / POLISHED FINISH

LUX

40"x40" R 100x100 R



Northon Light Grey Pul 100x100 R



Northon Almond Pul 100x100 R

P410R



Northon Light Grey Pul 100x100 R

P410R

Northon

PORCELÁNICO ESMALTADO / GLAZED PORCELAIN TILE
ACABADO MATE / MATT FINISH

47¼" x 47¼" R 120x120 R



Northon Grey 120x120 R



Northon

PORCELÁNICO ESMALTADO / GLAZED PORCELAIN TILE
ACABADO MATE / MATT FINISH

47¼" x 47¼" R 120x120 R



Northon Almond 120x120 R
Northon Taupe 120x120 R

G441R
G442R



Northon Light Grey 120x120 R
Northon Grey 120x120 R

G442R
G442R



Northon

PORCELÁNICO ESMALTADO / GLAZED PORCELAIN TILE
ACABADO MATE / MATT FINISH

23³/₄"x47¹/₄" R 60x120 R



Northon Almond 60x120 R / Northon Taupe 60x120 R



Northon

PORCELÁNICO ESMALTADO / GLAZED PORCELAIN TILE
ACABADO MATE / MATT FINISH

23³/₄"x47¹/₄" R 60x120 R



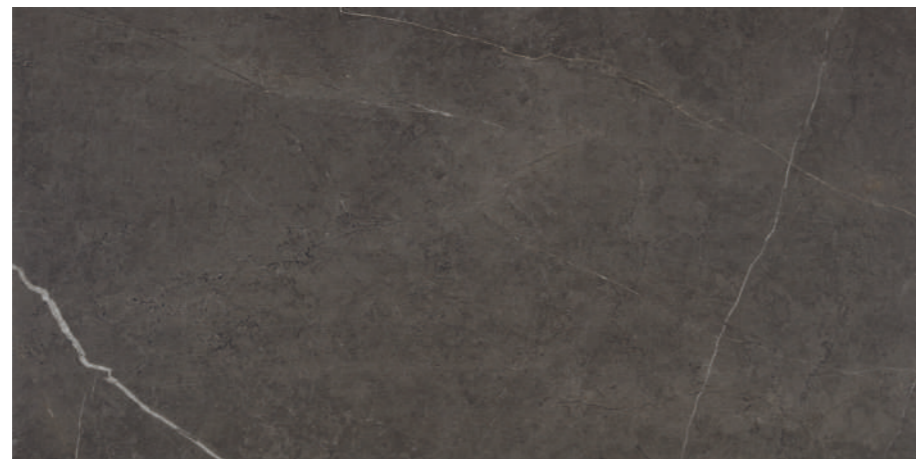
Northon Almond
G461R

60x120 R



Northon Light Grey
G461R

60x120 R



Northon Taupe
G462R

60x120 R



Northon Grey
G462R

60x120 R

Northon

PASTA PORCELÁNICA / PORCELAIN CLAY
ACABADO SATINADO / SATIN FINISH

40"x40" R 100x100 R



Northon Light Grey 100x100 R



Northon

PASTA PORCELÁNICA / PORCELAIN CLAY
ACABADO SATINADO / SATIN FINISH

40"x40" R 100x100 R



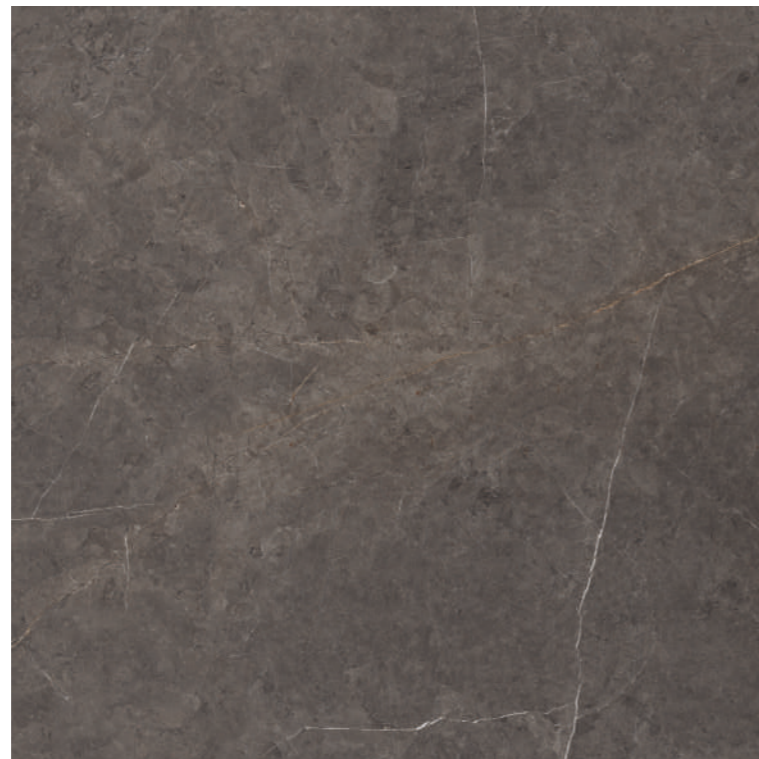
Northon Almond 100x100 R

G413R



Northon Light Grey 100x100 R

G414R



Northon Taupe 100x100 R

G416R



Northon Grey 100x100 R

G414R

Northon

PORCELÁNICO ESMALTADO / GLAZED PORCELAIN TILE
ACABADO MATE / MATT FINISH

23³/₄"x23³/₄" 60x60



Northon Taupe 60x60



Northon Almond 60x60

G3315



Northon Light Grey 60x60

G3315



Northon Taupe 60x60

G3317



Northon Grey 60x60

G3317

Northon

REVESTIMIENTO PASTA ROJA / RED BODY WALL TILE
ACABADO SATINADO / SATIN FINISH

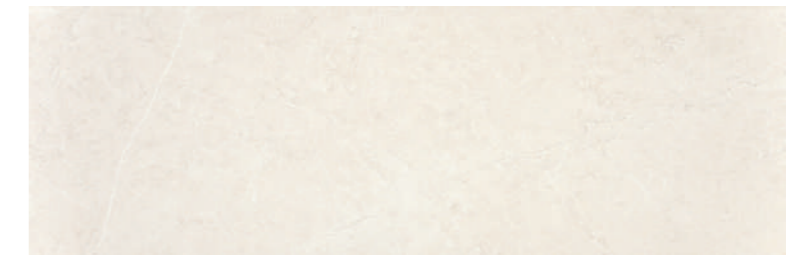
Northon Almond 33,3x100 / Bureau Camel 23x120 R

13¼" x 40 33,3x100



Northon Light Grey 33,3x100

G1630



Northon Almond 33,3x100

G1630

Technical Characteristics

Características técnicas

DESCRIPCIÓN DEL TEST TEST DESCRIPTION		NORMA STANDARD	GRUPO Bia Porcelánico esmaltado Glazed Porcelain Tile	GRUPO B1b Pasta porcelánica Porcelain Clay
Absorción de agua / Water absorption		UNE-EN ISO 10545-3	Ev ≤ 0,5%	0,5% < Ev ≤ 3%
Fuerza de rotura / Breaking Strength		UNE-EN ISO 10545-4	≥ 1300 N	≥ 1100 N
Resistencia a la flexión / Modulus of rupture		UNE-EN ISO 10545-4	≥ 35 N/mm ²	≥ 30 N/mm ²
Abrasion superficial / Surface Abrasion		UNE-EN-ISO 10545-7	A consultar según modelo Consult according to model	A consultar según modelo Consult according to model
Resistencia al cuarteo / Crazeing resistance		UNE-EN ISO 10545-11	Requerido Requested	Requerido Requested
Resistencia a la helada / Frost resistance		UNE-EN ISO 10545-12	Requerido Requested	Requerido Requested
Resistencia química Chemical resistance	Productos domésticos y de piscina Household chemicals and swimming pool salts	UNE-EN ISO 10545-13	Mínimo clase B Minimum class B	Mínimo clase B Minimum class B
	Ácidos a baja concentración Low concentration of acids	UNE-EN ISO 10545-13	Mínimo clase LB Minimum class LB	Mínimo clase LB Minimum class LB
	Bases a baja concentración Low concentration of alkalis	UNE-EN ISO 10545-13	Mínimo clase LB Minimum class LB	Mínimo clase LB Minimum class LB
Resistencia a las manchas / Stain resistance		UNE-EN ISO 10545-14	Mínimo clase 3 Minimum Class 3	Mínimo clase 3 Minimum Class 3

Symbology

Simbología



Packing List

PORCELANICO ESMALTADO / GLAZED PORCELAIN TILE									
Formato Nominal Nominal Size	Formato de trabajo Work size	Pzas/Cj	m ² /Cj	Kg/Cj	Kg/m ²	Pzs/Epl	Cjas/Epl	m ² /Epl	Kg/Epl
120x120 R PULIDO	119x119 R	1	1,4161	34,50	24,36	36	36	50,98	1.300,00
60x120 R PULIDO	59x119 R	2	1,4042	36,94	26,31	72	36	50,55	1.350,00
100x100 R PUL	98x98 R	2	1,9208	46,48	24,20	40	20	38,42	950,00
120x120 R	120x120 R	1	1,4400	34,00	23,61	36	36	51,84	1.300,00
60x120 R	59,5x120 R	2	1,4280	30,38	21,27	80	40	57,12	1.240,00
100x100 R	99,5x99,5 R	2	1,9800	44,58	22,52	48	24	47,52	1.090,00
60x60	60x60	4	1,4400	29,16	20,69	144	36	51,84	1.070,00
REVESTIMIENTO PASTA ROJA / RED BODY WALL TILE									
33,3x100	33,3x100	4	1,3320	24,70	18,54	200	50	66,60	1.260,00

© Copyright KTL, S.L.U.

Reservados todos los derechos.

KTL se reserva el derecho de modificar las características de sus productos sin preaviso de ningún tipo.

Los acabados se dan a título indicativo, quedando bajo reserva los ajustes de los colores consecuencia de las técnicas de impresión. Por ello las fotografías de los productos expuestos no son contractuales.

All rights reserved.

KTL reserves the right to change the characteristics of its products without prior notice.

Information about the finishes of the goods is only provided as a guide. As a result of the printing techniques there might be differences between the colours printed in this catalogue and these of the real products. Colours shown in this catalogue are not contractual.

KTLC
CERAMICA

Partida Casablanca nº 6 / 12593 Moncofar, Castellón. Spain

Phone: +34 964 584 069 / e-mail: info@ktlceramica.com / web: www.ktlceramica.com