

MADE IN ITALY. MADE TO EXCEL.

# MARVEL

---

GALA



Interactive version

 **atlas concorde**

September 2022



## MARBLE LOOK

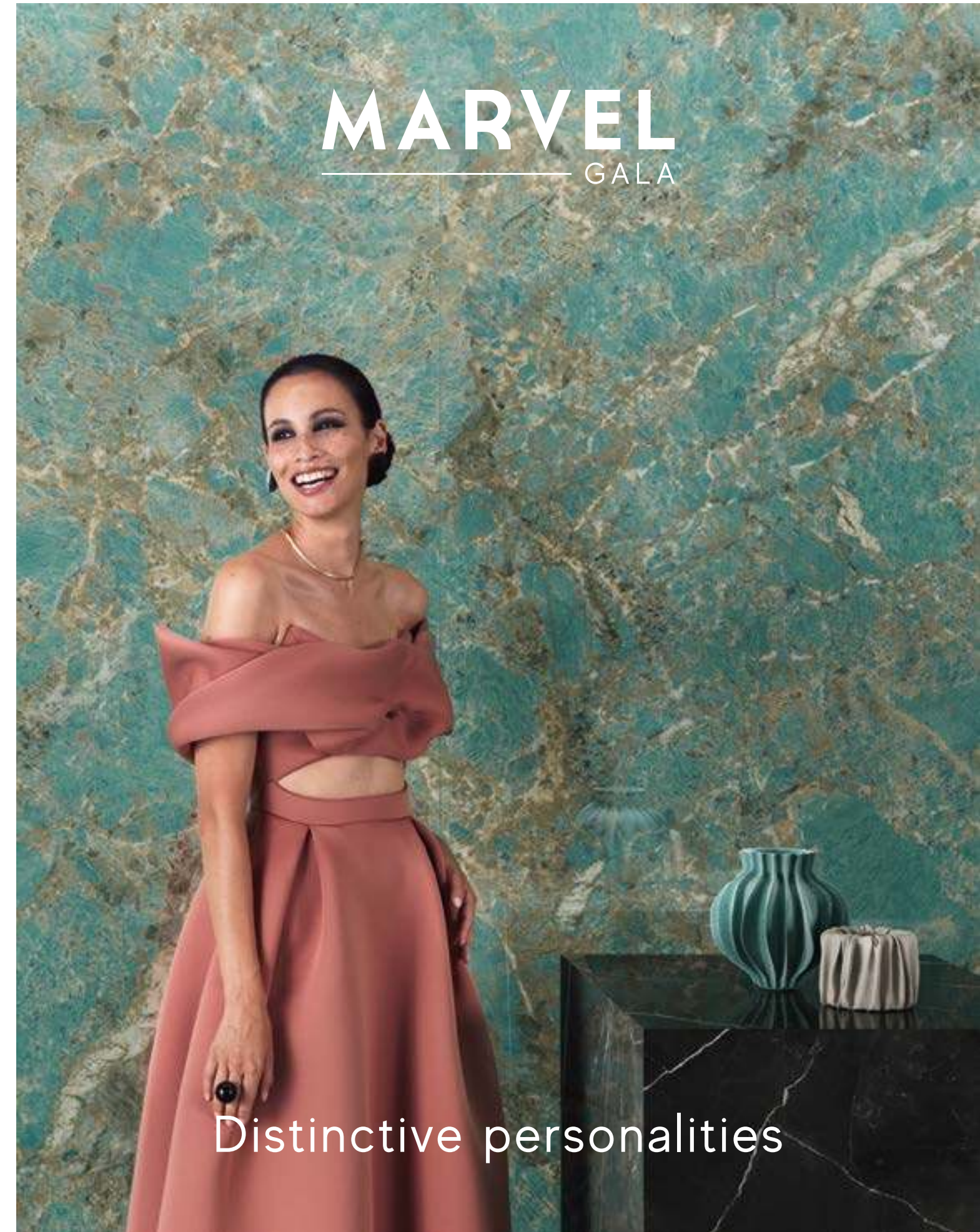
**PORCELAIN TILES  
GRÉS PORCELLANATO**  
Grès cérame  
Feinsteinzeug  
Gres porcelánico  
Керамический гранит



Atlas Concorde is one of the leading global brands in the production of ceramic tiles and large slabs for design and architecture. With over 50 years of history, two production plants, and numerous showrooms in the capitals of international design, Atlas Concorde offers integrated and sustainable ceramic systems for floors, walls, outdoor spaces, worktops, bathroom furnishings, facades and special projects. Design your world with Atlas Concorde.

Atlas Concorde è uno dei principali brand mondiali nella produzione di superfici e grandi lastre ceramiche per il design e l'architettura. Con oltre cinquant'anni di storia, due stabilimenti produttivi, numerose showroom nelle capitali della progettazione internazionale, offriamo sistemi ceramici integrati e sostenibili per pavimenti, rivestimenti, outdoor, piani di lavoro, arredo bagno, facciate e progetti speciali. Design your world with Atlas Concorde.

[atlasconcorde.com](https://atlasconcorde.com)



INDEX



ENJOY  
THE VIDEO



OVERVIEW



IMAGE  
GALLERY



SURFACE  
RANGE &  
TECHNICAL  
SPECS.



MARVEL WORLD



WE CARE







# MARVEL

GALA

Enjoy the video



Overview

Image Gallery

Surface Range & Technical Specs

COLLECTION RANGE  
TECHNICAL SPECIFICATIONS

Marvel World

We Care

PORCELAIN TILES: A SAFE CHOICE  
ENVIRONMENTAL SUSTAINABILITY  
ETHICAL IDENTITY

ENJOY THE VIDEO



OVERVIEW



IMAGE GALLERY



SURFACE RANGE & TECHNICAL SPECS.



MARVEL WORLD



WE CARE





© Ceramiche Atlas Concorde

# HERITAGE FOR THE FUTURE

MARVEL  
**10**  
YEARS  
2012 — 2022

▶ ENJOY  
THE VIDEO  
EN | IT | FR | DE | RU

Over the course of ten years the Marvel world has become a benchmark for international design. With its distinctive personality, Marvel Gala celebrates this anniversary with prestigious, unique surfaces like precious jewels.

In dieci anni, il mondo Marvel è diventato un punto di riferimento per il design internazionale. Con la sua personalità distintiva, Marvel Gala ne celebra l'anniversario con superfici prestigiose e uniche come gioielli preziosi.

En dix ans, l'univers Marvel est devenu une référence en matière de design international. Avec sa personnalité distinctive, Marvel Gala célèbre son anniversaire avec des surfaces prestigieuses et uniques comme des bijoux précieux.

In zehn Jahren hat sich die Marvel-Welt zu einem Bezugspunkt für internationales Design entwickelt. Mit seiner unverwechselbaren Persönlichkeit feiert Marvel Gala sein Jubiläum mit wertvollen und einzigartigen Oberflächen wie kostbare Juwelen.

En diez años, el mundo Marvel se ha convertido en un referente del diseño internacional. Con su personalidad distintiva, Marvel Gala celebra su aniversario con superficies prestigiosas y únicas como joyas preciosas.

За десять лет проект Marvel стал эталонным для мира международного дизайна. Коллекция Marvel Gala празднует юбилей своими новыми поверхностями, престижными и уникальными, как драгоценности.

ENJOY  
THE VIDEO



OVERVIEW



IMAGE  
GALLERY



SURFACE  
RANGE &  
TECHNICAL  
SPECS.



MARVEL WORLD



WE CARE





© Ceramiche Atlas Concorde

# Distinctive personalities.



Inspired by five natural stones with artistic beauty, Marvel Gala is a collection of exclusive surfaces. To stand out without compromise, with a strong personality and distinctive colors.

Ispirata a cinque pietre naturali dalla bellezza pittorica, Marvel Gala è una raccolta di superfici esclusive. Per distinguersi senza compromessi, con una personalità forte e colori caratteristici e distintivi.

Inspirée par cinq pierres naturelles d'une beauté picturale, Marvel Gala est une collection de surfaces exclusives. Se démarquer sans compromis, avec une forte personnalité et des couleurs distinctives.

Inspiriert von fünf Natursteinen von malerischer Schönheit, ist Marvel Gala eine Kollektion exklusiver Oberflächen. Sie zeichnet sich durch eine starke Persönlichkeit und typische und unverwechselbare Farben ohne Kompromisse aus.

Inspirada en cinco piedras naturales de belleza pictórica, Marvel Gala es una colección de superficies exclusivas. Se destaca sin concesiones, con una fuerte personalidad y colores distintivos.

Коллекция эксклюзивных поверхностей Marvel Gala имитирует пять природных камней живописной красоты. Ее совершенство бескомпромиссно, индивидуальность ярка, цвета характерны и неповторимы.

ENJOY THE VIDEO



OVERVIEW



IMAGE GALLERY



SURFACE RANGE & TECHNICAL SPECS.



MARVEL WORLD



WE CARE







Crystal White



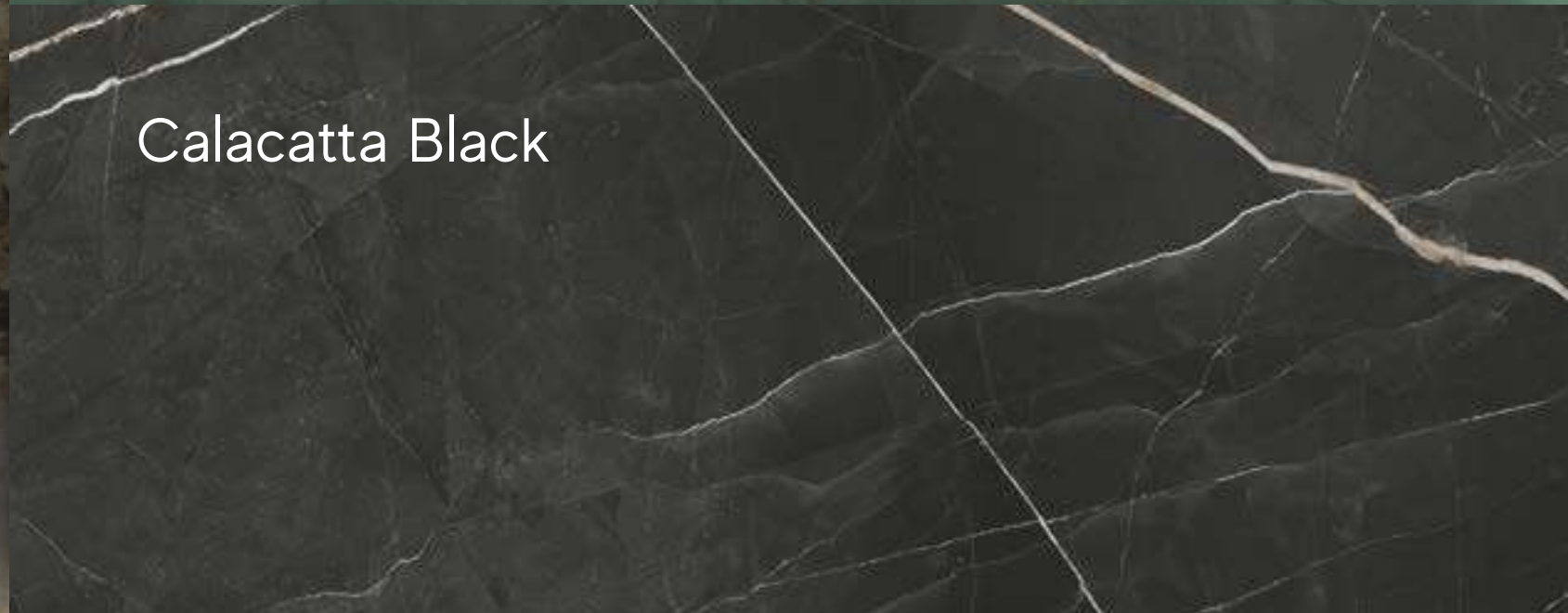
Desert Soul



Amazzonite



Exotic Green



Calacatta Black

ENJOY THE VIDEO



OVERVIEW



IMAGE GALLERY



SURFACE RANGE & TECHNICAL SPECS.



MARVEL WORLD



WE CARE







© Ceramiche Atlas Concorde

## Natural wonder.



Inspired by the rarest, most evocative wonders of nature, the Marvel Gala collection is a jewel, and its surfaces recall journeys to pristine places. Some of the most compelling locations on earth - the glaciers of Alaska, the Californian desert, the green of the Amazon, the turquoise of the tropical seas, the black of the Icelandic volcanoes - inspired the selection of the natural stones of the collection.

Dalla natura più rara e suggestiva, nascono ispirazioni esclusive. Marvel Gala è un gioiello e le sue superfici raccontano di viaggi in luoghi incontaminati. I ghiacciai dell'Alaska, il deserto californiano, il verde dell'Amazzonia, il turchese dei mari tropicali, il nero dei vulcani islandesi guidano la selezione di pietre naturali della collezione.

De la nature la plus rare et la plus évocatrice naissent des inspirations exclusives. Marvel Gala est un bijou et ses surfaces racontent des voyages dans des endroits préservés. Les glaciers d'Alaska, le désert californien, le vert de l'Amazone, le turquoise des mers tropicales, le noir des volcans islandais guident la sélection des pierres naturelles de la collection.

Aus der seltensten und eindrucksvollsten Natur werden exklusive Inspirationen geboren. Marvel Gala ist ein Juwel und seine Oberflächen erzählen von Reisen zu unberührten Orten. Die Gletscher Alaskas, die kalifornische Wüste, das Grün des Amazonas, das Türkis der tropischen Meere, das Schwarz der isländischen Vulkane bestimmen die Auswahl der Natursteine in der Kollektion.

De la naturaleza más recóndita y llamativa nacen inspiraciones exclusivas. Marvel Gala es una joya y sus superficies hablan de viajes a lugares vírgenes. Los glaciares de Alaska, el desierto californiano, el verde del Amazonas, el turquesa de los mares tropicales, el negro de los volcanes islandeses inspiran la selección de piedras naturales de la colección.

Самобытные уголки природы вдохновляют на создание эксклюзивных творений. Коллекция Marvel Gala – как маленькое сокровище, ее поверхности рассказывают о путешествиях в места, нетронутые рукой человека. Ледники Аляски, калифорнийская пустыня, зелень Амазонии, бирюза тропических морей, чернота исландских вулканов стали определяющими в подборе ее природных камней.

ENJOY THE VIDEO



OVERVIEW



IMAGE GALLERY



SURFACE RANGE & TECHNICAL SPECS.



MARVEL WORLD



WE CARE





# Colorful views.



© Ceramiche Atlas Concorde



© Ceramiche Atlas Concorde

Marbles, granites, and quartzites with bold, decisive tones from an array of countries furnish and celebrate every dimension of living including private and public spaces, and commercial and hospitality venues.

Marmi, graniti e quarziti dai toni forti e decisi, provenienti da diversi Paesi, arredano e celebrano ogni dimensione dell'abitare: spazi privati e pubblici, strutture del commercio e dell'ospitalità.

Le marbre, le granit et le quartzite dans des tons forts et décisifs provenant de différents pays décorent et célèbrent toutes les dimensions de l'habitat : espaces privés et publics, installations commerciales et hôtelières.

Marmor, Granit und Quarzit in kräftigen, ausgeprägten Farbtönen aus verschiedenen Ländern schmücken und heben jede Dimension des Wohnens hervor: private und öffentliche Räume, gewerbliche Einrichtungen sowie Beherbergungs- und Gaststättenbetriebe.

El mármol, el granito y la cuarcita en tonos fuertes y decididos de diferentes países decoran y celebran todas las dimensiones de la vida: espacios privados y públicos, instalaciones comerciales y de hotelería.

Мраморы, граниты и кварциты насыщенных тонов из разных стран мира ярко декорируют любое пространство: частные дома, общественные объекты, торговые помещения, отели.



© Ceramiche Atlas Concorde

ENJOY THE VIDEO



OVERVIEW



IMAGE GALLERY



SURFACE RANGE & TECHNICAL SPECS.



MARVEL WORLD



WE CARE







© Ceramiche Atlas Concorde

# Deep realism.



© Ceramiche Atlas Concorde



© Ceramiche Atlas Concorde

Surfaces that reproduce the original natural material in stunning detail. The graphic depth is remarkable, accentuated by a glossy polished finish.

Superfici che riproducono nel dettaglio il riferimento naturale. Notevole la profondità grafica accentuata dalla finitura, lappata lucida.

Des surfaces qui reproduisent en détail la référence naturelle. Remarquable profondeur graphique, accentuée par la finition lustrée.

Oberflächen, die den natürlichen Bezug im Detail wiedergeben. Bemerkenswerte grafische Tiefe, die durch die glänzende, geläppte Oberfläche hervorgehoben wird.

Superficies que reproducen con detalle la referencia a la naturaleza. Una notable profundidad gráfica, acentuada por el acabado brillante y pulido.

Поверхности точь-в-точь воссоздают фактуры исходных природных материалов. Изумительна глубина рисунка, подчеркнутая гладкой лапатированной поверхностью.



# Unlimited combinations.



© Ceramiche Atlas Concorde



© Ceramiche Atlas Concorde

The collection offers refined, scenic results when combined with the other marble surfaces of Marvel World or concrete-effect collections.

In accostamento con le altre superfici marmo di Marvel World, o con collezioni effetto cemento, offre un raffinato risultato scenico.

En combinaison avec les autres surfaces en marbre de Marvel World ou avec les collections à effet béton, il offre un résultat scénique raffiné.

In Kombination mit den anderen Marmoroberflächen von Marvel World oder mit Zementeffekt-Kollektionen wird eine raffinierte Szenerie angeboten.

En combinación con las otras superficies de mármol de Marvel World, o con colecciones de efecto cemento, ofrece un resultado escénico refinado.

В сочетании с плитками под мрамор Marvel World или с коллекциями под бетон получается изысканный и живописный результат.



© Ceramiche Atlas Concorde

ENJOY THE VIDEO



OVERVIEW



IMAGE GALLERY



SURFACE RANGE & TECHNICAL SPECS.



MARVEL WORLD



WE CARE







© Ceramiche Atlas Concorde

# A sustainable choice.



© Ceramiche Atlas Concorde

Marvel Gala surfaces were developed with a deep respect for the nature that inspired them because they are the result of a sustainable production process.

Le superfici Marvel Gala nascono nel rispetto della natura da cui traggono ispirazione perché sono il risultato di un processo produttivo improntato ai criteri di sostenibilità.

Les surfaces Marvel Gala sont créées dans le respect de la nature dont elles s'inspirent car elles sont le résultat d'un processus de production basé sur des critères de durabilité.

Die Oberflächen von Marvel Gala entstehen im Einklang mit der Natur, von der sie sich inspirieren lassen, denn sie sind das Ergebnis eines Produktionsprozesses, der auf Nachhaltigkeitskriterien beruht.

Las superficies de Marvel Gala se producen respetando la naturaleza en la que se inspiran porque son el resultado de un proceso de producción basado en criterios de sostenibilidad.

Плитка Marvel дружит с природой, так как изготавливается по устойчивым технологиям.

ENJOY THE VIDEO



OVERVIEW



IMAGE GALLERY



SURFACE RANGE & TECHNICAL SPECS.



MARVEL WORLD



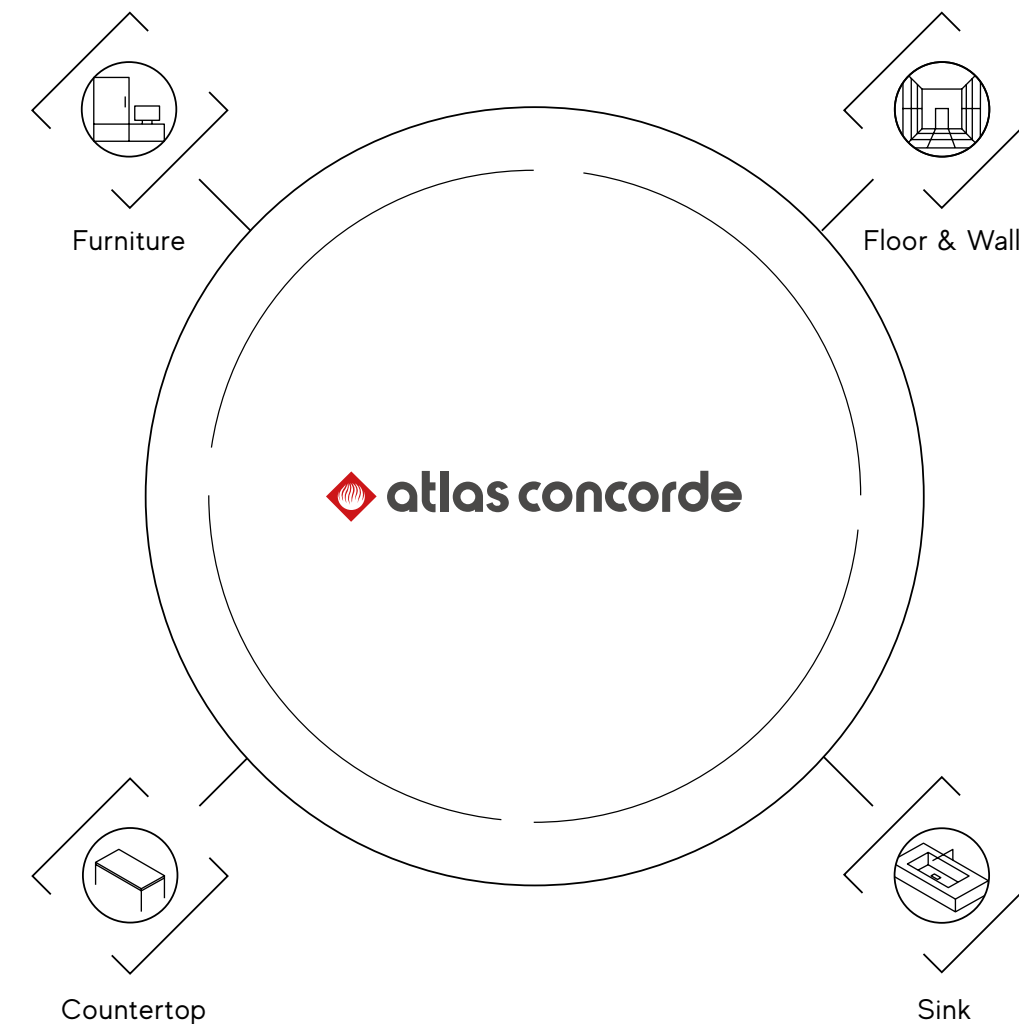
WE CARE







## Complete product system.



Marvel Gala is a complete system of surfaces: floors and walls can be coordinated with kitchen countertops, tables, and bathroom furnishings in porcelain.

Marvel Gala è un sistema completo di superfici: pavimenti e rivestimenti possono essere coordinati a piani cucina, tavoli e arredo bagno in gres porcellanato.

Marvel Gala est un système complet de surfaces: les sols et les murs peuvent être coordonnés avec des comptoirs de cuisine en grès cérame, des tables et des meubles de salle de bains.

Marvel Gala ist ein komplettes System für die Inneneinrichtung: Böden und Wände können mit Küchenarbeitsplatten, Tischen und Badeinrichtungen aus Feinsteinzeug kombiniert werden.

Marvel Gala es un sistema completo de superficies para el diseño de interiores: los pavimentos y revestimientos pueden coordinarse con encimeras de cocina, mesas y muebles de baño de gres porcelánico.

Marvel Gala – это комплексная система поверхностей, которая включает напольную и настенную плитку, которую можно сочетать с плитками для кухонных столешниц и предметами для ванной из керамогранита.

ENJOY THE VIDEO



OVERVIEW



IMAGE GALLERY



SURFACE RANGE & TECHNICAL SPECS.



MARVEL WORLD



WE CARE





# Image Gallery

ENJOY THE VIDEO



Exclusive Apartment - Calacatta Black



Private Bathroom - Crystal White



Boutique Hotel - Exotic Green



OVERVIEW



IMAGE GALLERY



- EXCLUSIVE APARTMENT
- PRIVATE BATHROOM
- BOUTIQUE HOTEL
- JEWELRY STORE
- BEAUTY SPA
- KITCHEN AREAS

Jewelry Store - Desert Soul



Beauty Spa - Amazonite



Kitchen Areas - Exotic Green / Desert Soul



SURFACE RANGE & TECHNICAL SPECS.



MARVEL WORLD



WE CARE





# Exclusive apartment.



FLOOR  
 Marvel Gala **Calacatta Black**  
 Polished/Lappato  
 120x120 cm | 47<sup>1</sup>/<sub>4</sub>"x47<sup>1</sup>/<sub>4</sub>"

WALL  
 Marvel Gala **Calacatta Black**  
 Polished/Lappato  
 120x278 cm | 47<sup>1</sup>/<sub>4</sub>"x109<sup>1</sup>/<sub>2</sub>"

Marvel Gala **Crystal White**  
 Polished/Lappato  
 120x278 cm | 47<sup>1</sup>/<sub>4</sub>"x109<sup>1</sup>/<sub>2</sub>"

INDEX



ENJOY THE VIDEO



OVERVIEW



IMAGE GALLERY



EXCLUSIVE APARTMENT

PRIVATE BATHROOM

BOUTIQUE HOTEL

JEWELRY STORE

BEAUTY SPA

KITCHEN AREAS

SURFACE RANGE & TECHNICAL SPECS.



MARVEL WORLD



WE CARE







© Ceramiche Atlas Concorde

FLOOR  
 Marvel Gala **Calacatta Black**  
 Polished/Lappato  
 120x120 cm | 47<sup>1</sup>/<sub>4</sub>"x47<sup>1</sup>/<sub>4</sub>"

WALL  
 Marvel Gala **Calacatta Black**  
 Polished/Lappato  
 120x278 cm | 47<sup>1</sup>/<sub>4</sub>"x109<sup>1</sup>/<sub>2</sub>"

Marvel Gala **Crystal White**  
 Polished/Lappato  
 120x278 cm | 47<sup>1</sup>/<sub>4</sub>"x109<sup>1</sup>/<sub>2</sub>"



© Ceramiche Atlas Concorde

INDEX



ENJOY THE VIDEO



OVERVIEW



IMAGE GALLERY



EXCLUSIVE APARTMENT

PRIVATE BATHROOM

BOUTIQUE HOTEL

JEWELRY STORE

BEAUTY SPA

KITCHEN AREAS

SURFACE RANGE & TECHNICAL SPECS.



MARVEL WORLD



WE CARE







FLOOR  
Marvel Gala **Calacatta Black**  
Polished/Lappato  
120x120 cm | 47<sup>1</sup>/<sub>4</sub>"x47<sup>1</sup>/<sub>4</sub>"

WALL  
Marvel Gala **Calacatta Black**  
Polished/Lappato  
120x278 cm | 47<sup>1</sup>/<sub>4</sub>"x109<sup>1</sup>/<sub>2</sub>"

Marvel Gala **Crystal White**  
Polished/Lappato  
120x278 cm | 47<sup>1</sup>/<sub>4</sub>"x109<sup>1</sup>/<sub>2</sub>"

COUNTERTOP  
Atlas Plan  
**Crystal White**  
Polished/Lappato  
162x324 cm | 63<sup>3</sup>/<sub>4</sub>"x127<sup>1</sup>/<sub>2</sub>"

INDEX



ENJOY THE VIDEO



OVERVIEW



IMAGE GALLERY



EXCLUSIVE APARTMENT

PRIVATE BATHROOM

BOUTIQUE HOTEL

JEWELRY STORE

BEAUTY SPA

KITCHEN AREAS

SURFACE RANGE & TECHNICAL SPECS.



MARVEL WORLD



WE CARE







© Ceramiche Atlas Concorde

FLOOR  
 Marvel Gala **Calacatta Black**  
 Polished/Lappato  
 120x120 cm | 47<sup>1</sup>/<sub>4</sub>"x47<sup>1</sup>/<sub>4</sub>"

WALL  
 Marvel Gala **Calacatta Black**  
 Polished/Lappato  
 120x278 cm | 47<sup>1</sup>/<sub>4</sub>"x109<sup>1</sup>/<sub>2</sub>"

Marvel Gala **Crystal White**  
 Polished/Lappato  
 120x278 cm | 47<sup>1</sup>/<sub>4</sub>"x109<sup>1</sup>/<sub>2</sub>"



© Ceramiche Atlas Concorde

ENJOY THE VIDEO



OVERVIEW



IMAGE GALLERY



EXCLUSIVE APARTMENT

PRIVATE BATHROOM

BOUTIQUE HOTEL

JEWELRY STORE

BEAUTY SPA

KITCHEN AREAS

SURFACE RANGE & TECHNICAL SPECS.



MARVEL WORLD



WE CARE







© Ceramiche Atlas Concorde



© Ceramiche Atlas Concorde

FLOOR  
 Marvel Gala **Crystal White**  
 Polished/Lappato  
 120x120 cm | 47<sup>1</sup>/<sub>4</sub>"x47<sup>1</sup>/<sub>4</sub>"

WALL  
 Marvel Gala **Calacatta Black**  
 Polished/Lappato  
 120x278 cm | 47<sup>1</sup>/<sub>4</sub>"x109<sup>1</sup>/<sub>2</sub>"

FURNITURE  
 Marvel X **Fior di Bosco**  
 Polished/Lappato  
 120x278 cm | 47<sup>1</sup>/<sub>4</sub>"x109<sup>1</sup>/<sub>2</sub>"

INDEX



ENJOY THE VIDEO



OVERVIEW



IMAGE GALLERY



EXCLUSIVE APARTMENT

PRIVATE BATHROOM

BOUTIQUE HOTEL

JEWELRY STORE

BEAUTY SPA

KITCHEN AREAS

SURFACE RANGE & TECHNICAL SPECS.



MARVEL WORLD



WE CARE





# Calacatta Black

What makes this variant special is its intensely dark background riven by lighter shades. Like the original marble, the white veins emphasize the partitions between the shades.

La sua peculiarità è l'intenso fondo scuro squarciato da tonalità più chiare. Come il marmo di ispirazione, le vene bianche sottolineano la partizione tra le sfumature.

Sa particularité est le fond sombre intense rivalisé par des teintes plus claires. A l'instar du marbre d'inspiration, les veines blanches soulignent la partition entre les teintes.

Seine Besonderheit ist der kräftig dunkle Hintergrund, der von helleren Schattierungen durchbrochen wird. Wie beim inspirierenden Marmor betonen die weißen Adern die Trennung zwischen den Farbtönen.

Su rasgo distintivo es el intenso fondo oscuro surcado por tonos más claros. Al igual que el mármol de inspiración, las vetas blancas enfatizan las diferencias de los varios tonos.

Особенность этого цвета – в насыщенном темном фоне, изрезанном более светлыми тонами. Как и на исходном образце мрамора, белые прожилки разделяют собой разные оттенки фона.

© Ceramiche Atlas Concorde

INDEX



ENJOY  
THE VIDEO



OVERVIEW



IMAGE  
GALLERY



EXCLUSIVE APARTMENT

PRIVATE BATHROOM

BOUTIQUE HOTEL

JEWELRY STORE

BEAUTY SPA

KITCHEN AREAS

SURFACE  
RANGE &  
TECHNICAL  
SPECS.



MARVEL WORLD



WE CARE





# Private bathroom.



- FLOOR  
Marvel Gala **Crystal White**  
Polished/Lappato  
120x120 cm | 47<sup>1</sup>/<sub>4</sub>"x47<sup>1</sup>/<sub>4</sub>"
- Boost **White**  
Grip  
120x120 cm | 47<sup>1</sup>/<sub>4</sub>"x47<sup>1</sup>/<sub>4</sub>"
- WALL  
Marvel Gala **Crystal White**  
Polished/Lappato  
120x278 cm | 47<sup>1</sup>/<sub>4</sub>"x109<sup>1</sup>/<sub>2</sub>"
- Marvel Gala **Amazonite**  
Polished/Lappato  
120x278 cm | 47<sup>1</sup>/<sub>4</sub>"x109<sup>1</sup>/<sub>2</sub>"
- FURNITURE  
Marvel Gala **Amazonite**  
Polished/Lappato  
120x278 cm | 47<sup>1</sup>/<sub>4</sub>"x109<sup>1</sup>/<sub>2</sub>"
- SINK & SHELF  
Atlas Concorde Habitat  
Mastertop Marvel Gala **Amazonite** Polished/Lappato  
180x50x12 cm | 70<sup>7</sup>/<sub>8</sub>"x19<sup>5</sup>/<sub>8</sub>"x4<sup>3</sup>/<sub>4</sub>"
- Shelf Marvel Gala **Amazonite** Polished/Lappato  
180x35x5 cm | 70<sup>7</sup>/<sub>8</sub>"x13<sup>1</sup>/<sub>4</sub>"x2"

© Ceramiche Atlas Concorde

INDEX



ENJOY THE VIDEO



OVERVIEW



IMAGE GALLERY



EXCLUSIVE APARTMENT

PRIVATE BATHROOM

BOUTIQUE HOTEL

JEWELRY STORE

BEAUTY SPA

KITCHEN AREAS

SURFACE RANGE & TECHNICAL SPECS.



MARVEL WORLD



WE CARE







© Ceramiche Atlas Concorde

**FLOOR**  
Marvel Gala **Crystal White**  
Polished/Lappato  
120x120 cm | 47<sup>1</sup>/<sub>4</sub>"x47<sup>1</sup>/<sub>4</sub>"

**Boost White**  
Grip  
120x120 cm | 47<sup>1</sup>/<sub>4</sub>"x47<sup>1</sup>/<sub>4</sub>"

**WALL**  
Marvel Gala **Crystal White**  
Polished/Lappato  
120x278 cm | 47<sup>1</sup>/<sub>4</sub>"x109<sup>1</sup>/<sub>2</sub>"

Marvel Gala **Amazonite**  
Polished/Lappato  
120x278 cm | 47<sup>1</sup>/<sub>4</sub>"x109<sup>1</sup>/<sub>2</sub>"

**FURNITURE**  
Marvel Gala **Amazonite**  
Polished/Lappato  
120x278 cm | 47<sup>1</sup>/<sub>4</sub>"x109<sup>1</sup>/<sub>2</sub>"

**SINK & SHELF**  
Atlas Concorde Habitat  
Mastertop Marvel Gala **Amazonite** Polished/Lappato  
180x50x12 cm | 70<sup>7</sup>/<sub>8</sub>"x19<sup>5</sup>/<sub>8</sub>"x4<sup>3</sup>/<sub>4</sub>"

Shelf Marvel Gala **Amazonite** Polished/Lappato  
180x35x5 cm | 70<sup>7</sup>/<sub>8</sub>"x13<sup>1</sup>/<sub>4</sub>"x2"



© Ceramiche Atlas Concorde





© Ceramiche Atlas Concorde



© Ceramiche Atlas Concorde

FLOOR  
 Marvel Gala **Crystal White**  
 Polished/Lappato  
 120x120 cm | 47<sup>1</sup>/<sub>4</sub>"x47<sup>1</sup>/<sub>4</sub>"

WALL  
 Marvel Gala **Crystal White**  
 Polished/Lappato  
 120x278 cm | 47<sup>1</sup>/<sub>4</sub>"x109<sup>1</sup>/<sub>2</sub>"

SINK & SHELF  
 Atlas Concorde Habitat  
 Mastertop Marvel Gala **Amazonite** Polished/Lappato  
 180x50x12 cm | 70<sup>7</sup>/<sub>8</sub>"x19<sup>5</sup>/<sub>8</sub>"x4<sup>3</sup>/<sub>4</sub>"

Shelf Marvel Gala **Amazonite** Polished/Lappato  
 180x35x5 cm | 70<sup>7</sup>/<sub>8</sub>"x13<sup>1</sup>/<sub>4</sub>"x2"





FLOOR  
Boost **Smoke**  
Matte/Matt  
120x120 cm | 47<sup>1</sup>/<sub>4</sub>"x47<sup>1</sup>/<sub>4</sub>"

WALL  
Marvel Gala **Crystal White**  
Polished/Lappato  
120x278 cm | 47<sup>1</sup>/<sub>4</sub>"x109<sup>1</sup>/<sub>2</sub>"

FURNITURE  
Marvel Gala **Desert Soul**  
Polished/Lappato  
120x278 cm | 47<sup>1</sup>/<sub>4</sub>"x109<sup>1</sup>/<sub>2</sub>"



# Crystal White

The neutral surface is crisscrossed by deep veins of beige, gray, and gold. Crystal White is inspired by a quartzite with colors that recall deep glaciers, sparkling snow, and the elegance of a solemn, grandiose nature.

La superficie neutra è solcata da venature profonde di colore beige, grigio e oro. Crystal White si ispira a una quarzite i cui colori ricordano la profondità dei ghiacciai, lo scintillio della neve, l'eleganza di una natura solenne e grandiosa.

La surface neutre est sillonnée de profondes veines de beige, de gris et d'or. Crystal White s'inspire d'un quartzite dont les couleurs rappellent la profondeur des glaciers, l'éclat de la neige, l'élégance d'une nature solennelle et grandiose.

Die neutrale Oberfläche ist von tiefen Adern in Beige, Grau und Gold durchzogen. Crystal White ist von einem Quarzit inspiriert, dessen Farben an die Tiefe der Gletscher, das Glitzern des Schnees und die Eleganz einer feierlichen und grandiosen Natur erinnern.

La superficie neutra está surcada por vetas profundas de color beige, gris y dorado. Crystal White se inspira en una cuarcita cuyos colores recuerdan la profundidad de los glaciares, el brillo de la nieve, la elegancia de una naturaleza solemne y grandiosa.

Нейтральный фон изрисован прожилками бежевого, серого и золотого цветов. В основе расцветки Crystal White – кварцит, тона которого напоминают глубину ледников, сверкание снега, торжественную элегантность северной природы.

© Ceramiche Atlas Concorde

INDEX



ENJOY  
THE VIDEO



OVERVIEW



IMAGE  
GALLERY



EXCLUSIVE APARTMENT

PRIVATE BATHROOM

BOUTIQUE HOTEL

JEWELRY STORE

BEAUTY SPA

KITCHEN AREAS

SURFACE  
RANGE &  
TECHNICAL  
SPECS.



MARVEL WORLD



WE CARE





# Boutique hotel.



© Ceramiche Atlas Concorde

FLOOR  
 Marvel Gala **Calacatta Black**  
 Polished/Lappato  
 120x120 cm | 47<sup>1</sup>/<sub>4</sub>"x47<sup>1</sup>/<sub>4</sub>"

Marvel Gala **Exotic Green**  
 Polished/Lappato  
 120x120 cm | 47<sup>1</sup>/<sub>4</sub>"x47<sup>1</sup>/<sub>4</sub>"

WALL  
 Marvel Gala **Exotic Green**  
 Polished/Lappato  
 120x278 cm | 47<sup>1</sup>/<sub>4</sub>"x109<sup>1</sup>/<sub>2</sub>"

Boost **White**  
 Matte/Matt  
 120x278 cm | 47<sup>1</sup>/<sub>4</sub>"x109<sup>1</sup>/<sub>2</sub>"

Marvel Gala **Calacatta Black**  
 Polished/Lappato  
 120x278 cm | 47<sup>1</sup>/<sub>4</sub>"x109<sup>1</sup>/<sub>2</sub>"

FURNITURE  
 Marvel Gala **Calacatta Black**  
 Polished/Lappato  
 120x278 cm | 47<sup>1</sup>/<sub>4</sub>"x109<sup>1</sup>/<sub>2</sub>"





© Ceramiche Atlas Concorde



© Ceramiche Atlas Concorde

FLOOR  
 Marvel Gala **Exotic Green**  
 Polished/Lappato  
 120x120 cm | 47<sup>1</sup>/<sub>4</sub>"x47<sup>1</sup>/<sub>4</sub>"

Marvel Gala **Calacatta Black**  
 Polished/Lappato  
 120x120 cm | 47<sup>1</sup>/<sub>4</sub>"x47<sup>1</sup>/<sub>4</sub>"

WALL  
 Marvel Gala **Exotic Green**  
 Polished/Lappato  
 120x278 cm | 47<sup>1</sup>/<sub>4</sub>"x109<sup>1</sup>/<sub>2</sub>"

Marvel Gala **Calacatta Black**  
 Polished/Lappato  
 120x278 cm | 47<sup>1</sup>/<sub>4</sub>"x109<sup>1</sup>/<sub>2</sub>"

INDEX



ENJOY THE VIDEO



OVERVIEW



IMAGE GALLERY



EXCLUSIVE APARTMENT  
PRIVATE BATHROOM

BOUTIQUE HOTEL

JEWELRY STORE  
BEAUTY SPA  
KITCHEN AREAS

SURFACE RANGE & TECHNICAL SPECS.



MARVEL WORLD



WE CARE







© Ceramiche Atlas Concorde



© Ceramiche Atlas Concorde

FLOOR  
 Marvel Gala **Calacatta Black**  
 Polished/Lappato  
 120x120 cm | 47<sup>1</sup>/<sub>4</sub>"x47<sup>1</sup>/<sub>4</sub>"

WALL  
 Marvel Gala **Exotic Green**  
 Polished/Lappato  
 120x278 cm | 47<sup>1</sup>/<sub>4</sub>"x109<sup>1</sup>/<sub>2</sub>"

FURNITURE  
 Boost **Smoke**  
 Matte/Matt  
 120x278 cm | 47<sup>1</sup>/<sub>4</sub>"x109<sup>1</sup>/<sub>2</sub>"

INDEX



ENJOY THE VIDEO



OVERVIEW



IMAGE GALLERY



EXCLUSIVE APARTMENT  
PRIVATE BATHROOM

BOUTIQUE HOTEL

JEWELRY STORE  
BEAUTY SPA  
KITCHEN AREAS

SURFACE RANGE & TECHNICAL SPECS.



MARVEL WORLD



WE CARE





# Exotic Green

An enveloping blend of emerald green and sage, inspired by a stone of Brazilian origin evoking the colors of tropical forests. The uniform background is interspersed with a weave of variegated veins in crystalline white, dark gray, and amber.

Una miscela avvolgente di sfumature verde smeraldo e salvia, ispirata a una pietra di origine brasiliana, evoca i colori delle foreste tropicali. Il fondo omogeneo è intervallato da un intreccio di venature variegata, bianche cristalline, grigie scure e ambrate.

Un mélange enveloppant de nuances de vert émeraude et de sauge, inspiré d'une pierre d'origine brésilienne, évoque les couleurs des forêts tropicales. Le fond homogène est entrecoupé d'une trame de veines bigarrées, blanc cristal, gris foncé et ambre.

Eine umhüllende Mischung aus smaragdgrünen und salbeifarbenen Tönen, inspiriert von einem Stein brasilianischen Ursprungs, erinnert an die Farben der tropischen Wälder. Der homogene Hintergrund ist von einem Netz aus verschiedenfarbigen Adern durchzogen, die kristallweiß, dunkelgrau und bernsteinfarben sind.

Una envolvente mezcla de tonos verde esmeralda y salvia, inspirada en una piedra originaria de Brasil, evoca los colores de los bosques tropicales. El fondo homogéneo es intercalado con una trama de vetas abigarradas, blanco cristalino, gris oscuro y ámbar.

Чарующее смешение изумрудно-зеленых и шалфейных оттенков навеяно камнем бразильского происхождения и напоминает цвета тропических лесов. На однородном фоне переплетаются пестрые прожилки кристалльно-белых, темно-серых и янтарных оттенков.

© Ceramiche Atlas Concorde

INDEX



ENJOY  
THE VIDEO



OVERVIEW



IMAGE  
GALLERY



EXCLUSIVE APARTMENT  
PRIVATE BATHROOM

BOUTIQUE HOTEL

JEWELRY STORE  
BEAUTY SPA  
KITCHEN AREAS

SURFACE  
RANGE &  
TECHNICAL  
SPECS.



MARVEL WORLD



WE CARE





# Jewelry store.



© Ceramiche Atlas Concorde

FLOOR  
 Marvel Gala **Desert Soul**  
 Polished/Lappato  
 120x120 cm | 47<sup>1</sup>/<sub>4</sub>"x47<sup>1</sup>/<sub>4</sub>"

Entice **Browned Elegant**  
 Matte/Matt  
 18,5x150 cm | 7<sup>1</sup>/<sub>4</sub>"x59"

WALL  
 Marvel Gala **Desert Soul**  
 Polished/Lappato  
 120x278 cm | 47<sup>1</sup>/<sub>4</sub>"x109<sup>1</sup>/<sub>2</sub>"

Marvel Gala **Calacatta Black**  
 Polished/Lappato  
 120x278 cm | 47<sup>1</sup>/<sub>4</sub>"x109<sup>1</sup>/<sub>2</sub>"

FURNITURE  
 Marvel Gala **Calacatta Black**  
 Polished/Lappato  
 120x278 cm | 47<sup>1</sup>/<sub>4</sub>"x109<sup>1</sup>/<sub>2</sub>"

ENJOY THE VIDEO



OVERVIEW



IMAGE GALLERY



EXCLUSIVE APARTMENT  
 PRIVATE BATHROOM  
 BOUTIQUE HOTEL

JEWELRY STORE

BEAUTY SPA  
 KITCHEN AREAS

SURFACE RANGE & TECHNICAL SPECS.



MARVEL WORLD



WE CARE







© Ceramiche Atlas Concorde



© Ceramiche Atlas Concorde

FLOOR  
 Marvel Gala **Desert Soul**  
 Polished/Lappato  
 120x120 cm | 47<sup>1</sup>/<sub>4</sub>"x47<sup>1</sup>/<sub>4</sub>"

WALL  
 Marvel Gala **Desert Soul**  
 Polished/Lappato  
 120x278 cm | 47<sup>1</sup>/<sub>4</sub>"x109<sup>1</sup>/<sub>2</sub>"

FURNITURE  
 Marvel Gala **Calacatta Black**  
 Polished/Lappato  
 120x278 cm | 47<sup>1</sup>/<sub>4</sub>"x109<sup>1</sup>/<sub>2</sub>"

Marvel Gala **Calacatta Black**  
 Polished/Lappato  
 120x278 cm | 47<sup>1</sup>/<sub>4</sub>"x109<sup>1</sup>/<sub>2</sub>"

INDEX



ENJOY THE VIDEO



OVERVIEW



IMAGE GALLERY



EXCLUSIVE APARTMENT  
 PRIVATE BATHROOM  
 BOUTIQUE HOTEL

JEWELRY STORE

BEAUTY SPA

KITCHEN AREAS

SURFACE RANGE & TECHNICAL SPECS.



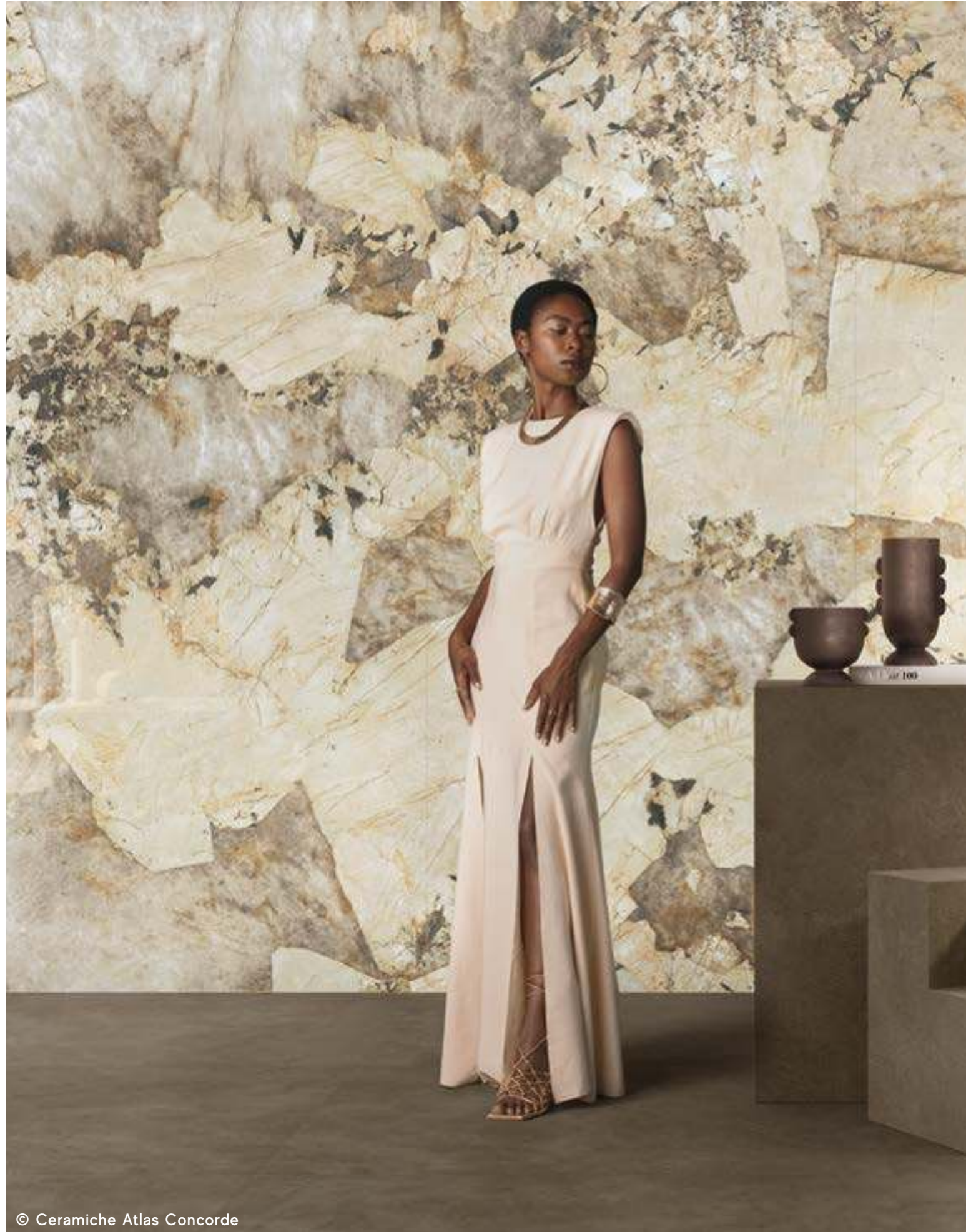
MARVEL WORLD



WE CARE







© Ceramiche Atlas Concorde



© Ceramiche Atlas Concorde

FLOOR  
Boost Natural **Umber**  
Matte/Matt Sensitech  
120x120 cm | 47<sup>1</sup>/<sub>4</sub>"x47<sup>1</sup>/<sub>4</sub>"

WALL  
Marvel Gala **Desert Soul**  
Polished/Lappato  
120x278 cm | 47<sup>1</sup>/<sub>4</sub>"x109<sup>1</sup>/<sub>2</sub>"

FURNITURE  
Boost Natural **Umber**  
Matte/Matt Sensitech  
120x120 cm | 47<sup>1</sup>/<sub>4</sub>"x47<sup>1</sup>/<sub>4</sub>"



# Desert Soul

Fields of white, black, beige, and brown, bordered by golden veins. Desert Soul was inspired by a quartzite born in the heart of South American volcanoes, a material of great value that recalls the tones of the desert.

Campiture di bianco, nero, beige e marrone, arginate da venature dorate. Desert Soul è ispirato a una quarzite nata nel cuore di vulcani sudamericani, un materiale di grande pregio che ricorda i toni del deserto.

Des pans de blanc, de noir, de beige et de brun, bordés de veines dorées. La Desert Soul est inspiré par un quartzite né au cœur des volcans d'Amérique du Sud, un matériau de grande valeur, rappelant les tons du désert.

Weiß, Schwarz, Beige und Braun als Hintergrundfarben, umrandet von goldfarbenen Adern. Desert Soul ist von einem Quarzit inspiriert, der im Herzen südamerikanischer Vulkane entstanden ist, einem sehr hochwertigen Material, das an Wüstentöne erinnert.

Franjas de color blanco, negro, beige y marrón, ribeteadas por vetas doradas. Desert Soul se inspira en la cuarcita nacida en el corazón de los volcanes sudamericanos, un material de prestigio que recuerda a los tonos del desierto.

Пятна белого, черного, бежевого, коричневого оттенков, обрамленные золотистыми прожилками. Цвет Desert Soul имитирует кварцит, залегающий в сердце южноамериканских вулканов и напоминающий тона пустыни.

© Ceramiche Atlas Concorde

INDEX



ENJOY  
THE VIDEO



OVERVIEW



IMAGE  
GALLERY



EXCLUSIVE APARTMENT  
PRIVATE BATHROOM  
BOUTIQUE HOTEL

JEWELRY STORE

BEAUTY SPA

KITCHEN AREAS

SURFACE  
RANGE &  
TECHNICAL  
SPECS.



MARVEL WORLD



WE CARE





# Beauty spa.



© Ceramiche Atlas Concorde

- FLOOR**  
Marvel Gala **Calacatta Black**  
Polished/Lappato  
120x120 cm | 47<sup>1</sup>/<sub>4</sub>"x47<sup>1</sup>/<sub>4</sub>"
- WALL**  
Marvel Gala **Amazonite**  
Polished/Lappato  
120x278 cm | 47<sup>1</sup>/<sub>4</sub>"x109<sup>1</sup>/<sub>2</sub>"
- Boost White**  
Matte/Matt  
120x278 cm | 47<sup>1</sup>/<sub>4</sub>"x109<sup>1</sup>/<sub>2</sub>"
- SINK & SHELF**  
Atlas Concorde Habitat  
Sit-on basin Marvel Gala **Crystal White** Polished/Lappato  
65x50x15 cm | 25<sup>5</sup>/<sub>8</sub>"x19<sup>2</sup>/<sub>8</sub>"x5<sup>7</sup>/<sub>8</sub>"
- Top Marvel Gala **Crystal White** Polished/Lappato  
180x50x15 cm | 70<sup>7</sup>/<sub>8</sub>"x19<sup>2</sup>/<sub>8</sub>"x5<sup>7</sup>/<sub>8</sub>"
- Shelf Marvel Gala **Crystal White** Polished/Lappato  
80x35x5 cm | 70<sup>7</sup>/<sub>8</sub>"x13<sup>1</sup>/<sub>4</sub>"x2"
- FURNITURE**  
Marvel Gala **Amazonite** Polished/Lappato  
180x50x12 cm | 70<sup>7</sup>/<sub>8</sub>"x19<sup>2</sup>/<sub>8</sub>"x4<sup>3</sup>/<sub>4</sub>"





© Ceramiche Atlas Concorde

**FLOOR**  
 Marvel Gala **Calacatta Black**  
 Polished/Lappato  
 120x120 cm | 47<sup>1</sup>/<sub>4</sub>"x47<sup>1</sup>/<sub>4</sub>"

**WALL**  
 Marvel Gala **Amazonite**  
 Polished/Lappato  
 120x278 cm | 47<sup>1</sup>/<sub>4</sub>"x109<sup>1</sup>/<sub>2</sub>"

**Boost White**  
 Matte/Matt  
 120x278 cm | 47<sup>1</sup>/<sub>4</sub>"x109<sup>1</sup>/<sub>2</sub>"

**SINK & SHELF**  
 Atlas Concorde Habitat  
 Sit-on basin Marvel Gala **Crystal White** Polished/Lappato  
 65x50x15 cm | 25<sup>5</sup>/<sub>8</sub>"x19<sup>5</sup>/<sub>8</sub>"x5<sup>7</sup>/<sub>8</sub>"

Top Marvel Gala **Crystal White** Polished/Lappato  
 180x50x15 cm | 70<sup>7</sup>/<sub>8</sub>"x19<sup>5</sup>/<sub>8</sub>"x5<sup>7</sup>/<sub>8</sub>"

Shelf Marvel Gala **Crystal White** Polished/Lappato  
 80x35x5 cm | 70<sup>7</sup>/<sub>8</sub>"x13<sup>1</sup>/<sub>4</sub>"x2"

**FURNITURE**  
 Marvel Gala **Amazonite** Polished/Lappato  
 180x50x12 cm | 70<sup>7</sup>/<sub>8</sub>"x19<sup>5</sup>/<sub>8</sub>"x4<sup>3</sup>/<sub>4</sub>"



© Ceramiche Atlas Concorde





© Ceramiche Atlas Concorde



© Ceramiche Atlas Concorde

**FLOOR**  
Marvel Gala **Calacatta Black**  
Polished/Lappato  
120x120 cm | 47<sup>1</sup>/<sub>4</sub>"x47<sup>1</sup>/<sub>4</sub>"

**WALL**  
Marvel Gala **Amazonite**  
Polished/Lappato  
120x278 cm | 47<sup>1</sup>/<sub>4</sub>"x109<sup>1</sup>/<sub>2</sub>"

**Boost White**  
Matte/Matt  
120x278 cm | 47<sup>1</sup>/<sub>4</sub>"x109<sup>1</sup>/<sub>2</sub>"

**SINK & SHELF**  
Atlas Concorde Habitat  
Sit-on basin Marvel Gala **Crystal White** Polished/Lappato  
65x50x15 cm | 25<sup>5</sup>/<sub>8</sub>"x19<sup>5</sup>/<sub>8</sub>"x5<sup>7</sup>/<sub>8</sub>"

Top Marvel Gala **Crystal White** Polished/Lappato  
180x50x15 cm | 70<sup>7</sup>/<sub>8</sub>"x19<sup>5</sup>/<sub>8</sub>"x5<sup>7</sup>/<sub>8</sub>"

Shelf Marvel Gala **Crystal White** Polished/Lappato  
80x35x5 cm | 70<sup>7</sup>/<sub>8</sub>"x13<sup>1</sup>/<sub>4</sub>"x2"

**FURNITURE**  
Marvel Gala **Amazonite** Polished/Lappato  
180x50x12 cm | 70<sup>7</sup>/<sub>8</sub>"x19<sup>5</sup>/<sub>8</sub>"x4<sup>1</sup>/<sub>4</sub>"





© Ceramiche Atlas Concorde



© Ceramiche Atlas Concorde

FLOOR  
 Marvel Gala **Calacatta Black**  
 Polished/Lappato  
 120x120 cm | 47<sup>1</sup>/<sub>4</sub>"x47<sup>1</sup>/<sub>4</sub>"

WALL  
 Marvel Gala **Amazonite**  
 Polished/Lappato  
 120x278 cm | 47<sup>1</sup>/<sub>4</sub>"x109<sup>1</sup>/<sub>2</sub>"

FURNITURE  
 Marvel Gala **Calacatta Black**  
 Polished/Lappato  
 120x278 cm | 47<sup>1</sup>/<sub>4</sub>"x109<sup>1</sup>/<sub>2</sub>"

INDEX



ENJOY THE VIDEO



OVERVIEW



IMAGE GALLERY



EXCLUSIVE APARTMENT  
 PRIVATE BATHROOM  
 BOUTIQUE HOTEL  
 JEWELRY STORE

BEAUTY SPA  
 KITCHEN AREAS

SURFACE RANGE & TECHNICAL SPECS.



MARVEL WORLD



WE CARE





# Amazonite

A surface inspired by the turquoise of Brazilian quartzite, Amazonite has contrasting veins alternating with crystalline inclusions that recall the depths of tropical seabeds.

Superficie ispirata al turchese della quarzite brasiliana, l'Amazonite presenta venature a contrasto alternate a inclusioni cristalline che ricordano le profondità dei fondali marini tropicali.

Une surface inspirée du turquoise du quartzite brésilien, l'Amazonite présente des veines contrastées alternant avec des inclusions cristallines qui rappellent les profondeurs des fonds marins tropicaux.

Eine Oberfläche, die vom Türkis des brasilianischen Quarzits inspiriert ist. Amazonite weist kontrastreiche Adern auf, die sich mit kristallinen Einschlüssen abwechseln, die an die Tiefen tropischer Meeresböden erinnern.

Una superficie inspirada en el turquesa de la cuarcita brasileña, Amazonite presenta vetas contrastadas que se alternan con inclusiones cristalinas que recuerdan las profundidades del fondo de los mares tropicales.

Цвет Amazonite передает бирюзовую окраску бразильского кварцита с контрастными прожилками и кристаллическими вкраплениями, напоминающими глубины тропических морей.

© Ceramiche Atlas Concorde

INDEX



ENJOY  
THE VIDEO



OVERVIEW



IMAGE  
GALLERY



EXCLUSIVE APARTMENT  
PRIVATE BATHROOM  
BOUTIQUE HOTEL  
JEWELRY STORE

BEAUTY SPA  
KITCHEN AREAS

SURFACE  
RANGE &  
TECHNICAL  
SPECS.



MARVEL WORLD



WE CARE





# Kitchen areas.



© Ceramiche Atlas Concorde

FLOOR  
 Marvel X Fior di Bosco  
 Polished/Lappato  
 120x240 cm | 47<sup>1</sup>/<sub>4</sub>"x94<sup>1</sup>/<sub>2</sub>"

WALL  
 Marvel Gala Exotic Green  
 Polished/Lappato  
 120x278 cm | 47<sup>1</sup>/<sub>4</sub>"x109<sup>1</sup>/<sub>2</sub>"

COUNTERTOP  
 Atlas Plan  
 Exotic Green  
 Polished/Lappato  
 162x324 cm | 63<sup>3</sup>/<sub>4</sub>"x127<sup>1</sup>/<sub>2</sub>"

ENJOY THE VIDEO



OVERVIEW



IMAGE GALLERY



- EXCLUSIVE APARTMENT
- PRIVATE BATHROOM
- BOUTIQUE HOTEL
- JEWELRY STORE
- BEAUTY SPA

KITCHEN AREAS

SURFACE RANGE & TECHNICAL SPECS.



MARVEL WORLD



WE CARE







© Ceramiche Atlas Concorde



© Ceramiche Atlas Concorde

FLOOR  
 Marvel X Fior di Bosco  
 Polished/Lappato  
 120x240 cm | 47<sup>1</sup>/<sub>4</sub>"x94<sup>1</sup>/<sub>2</sub>"

WALL  
 Marvel Gala Exotic Green  
 Polished/Lappato  
 120x278 cm | 47<sup>1</sup>/<sub>4</sub>"x109<sup>1</sup>/<sub>2</sub>"

COUNTERTOP  
 Atlas Plan  
 Exotic Green  
 Polished/Lappato  
 162x324 cm | 63<sup>3</sup>/<sub>4</sub>"x127<sup>1</sup>/<sub>2</sub>"

ENJOY THE VIDEO



OVERVIEW



IMAGE GALLERY



EXCLUSIVE APARTMENT  
 PRIVATE BATHROOM  
 BOUTIQUE HOTEL  
 JEWELRY STORE  
 BEAUTY SPA

KITCHEN AREAS

SURFACE RANGE & TECHNICAL SPECS.



MARVEL WORLD



WE CARE







ENJOY THE VIDEO



OVERVIEW



IMAGE GALLERY



- EXCLUSIVE APARTMENT
- PRIVATE BATHROOM
- BOUTIQUE HOTEL
- JEWELRY STORE
- BEAUTY SPA

KITCHEN AREAS

SURFACE RANGE & TECHNICAL SPECS.



MARVEL WORLD



WE CARE



FLOOR  
 Boost Pro **Taupe**  
 Matte/Matt  
 120x240 cm | 47<sup>1</sup>/<sub>4</sub>"x94<sup>1</sup>/<sub>2</sub>"

WALL  
 Marvel Gala **Desert Soul**  
 Polished/Lappato  
 120x278 cm | 47<sup>1</sup>/<sub>4</sub>"x109<sup>1</sup>/<sub>2</sub>"

COUNTERTOP  
 Atlas Plan  
**Desert Soul**  
 Polished/Lappato  
 162x324 cm | 63<sup>3</sup>/<sub>4</sub>"x127<sup>1</sup>/<sub>2</sub>"



FLOOR  
Boost Pro **Taupe**  
Matte/Matt  
120x240 cm | 47<sup>1</sup>/<sub>4</sub>"x94<sup>1</sup>/<sub>2</sub>"

WALL  
Marvel Gala **Desert Soul**  
Polished/Lappato  
120x278 cm | 47<sup>1</sup>/<sub>4</sub>"x109<sup>1</sup>/<sub>2</sub>"

COUNTERTOP  
Atlas Plan  
**Desert Soul**  
Polished/Lappato  
162x324 cm | 63<sup>3</sup>/<sub>4</sub>"x127<sup>1</sup>/<sub>2</sub>"



© Ceramiche Atlas Concorde



© Ceramiche Atlas Concorde

INDEX



ENJOY THE VIDEO



OVERVIEW



IMAGE GALLERY



EXCLUSIVE APARTMENT  
PRIVATE BATHROOM  
BOUTIQUE HOTEL  
JEWELRY STORE  
BEAUTY SPA

KITCHEN AREAS

SURFACE RANGE & TECHNICAL SPECS.



MARVEL WORLD



WE CARE







# Surface Range & Technical Specs.

- 82 MARVEL GALA RANGE
- 86 TECHNICAL SPECIFICATIONS

INDEX



ENJOY THE VIDEO



OVERVIEW



IMAGE GALLERY



SURFACE RANGE & TECHNICAL SPECS.



COLLECTION RANGE  
TECHNICAL SPECIFICATIONS

MARVEL WORLD



WE CARE





# Porcelain tiles

**PORCELAIN TILES** - Gres Porcellanato - Grès cérame - Feinsteinzeug Gres porcelánico - Керамический гранит

**RECTIFIED MONOCALIBER** - Rettificato monocalibro - Rectifié mono-calibre - Geschliffen einkalibrig - Rectificado monocalibre - Ретифицированный в одном калибре



120x278 cm - 47 <sup>1</sup> / <sub>4</sub> "x109 <sup>1</sup> / <sub>2</sub> "	± 6 mm	Polished	Polished	Polished	Polished	Polished
120x120 cm - 47 <sup>1</sup> / <sub>4</sub> "x47 <sup>1</sup> / <sub>4</sub> "	± 9 mm	Polished	Polished	Polished	Polished	Polished
60x120 cm - 23 <sup>5</sup> / <sub>8</sub> "x47 <sup>1</sup> / <sub>4</sub> "	± 9 mm	Polished	Polished	Polished	Polished	Polished



162x324 cm - 63 <sup>3</sup> / <sub>4</sub> "x127 <sup>1</sup> / <sub>2</sub> " > Non rectified - non rettificato	± 6 mm	Polished *	Polished *			
	± 12 mm	Polished * Silk *	Polished * Silk *		Polished *	
	± 20 mm	Polished *	Polished *			

\* Also available in bookmatch



The glossy polished finish is suitable for residential or low-traffic commercial floors, where no anti-slip performance is required, and for walls. The polished glossy surface finish, surprisingly brilliant and bright, features slight irregularities typical of natural marble. The extraordinary brilliance and the easy cleaning of the surface are the result of in-depth research aimed at guaranteeing its durability over time. If the product is in direct contact with the outdoors, provide devices for absorbing moisture and dirt to prevent scratches. - La finitura lappata lucida è indicata per pavimenti residenziali o commerciali poco sollecitati, laddove non siano richieste prestazioni antiscivolo, e per rivestimenti. La finitura lappata lucida offre una superficie sorprendentemente brillante e specchiante, con lievi irregolarità tipiche dei marmi naturali. La straordinaria lucentezza e l'elevata pulibilità della superficie sono frutto di studi approfonditi e accurate ricerche tecniche volte a garantirne la persistenza nel tempo. Se il prodotto è a diretto contatto con l'esterno, prevedere dei dispositivi di assorbimento dell'umidità e della sporcizia per prevenire la formazione di graffi. La finitura polie brillante est indiquée pour les revêtements de murs, ainsi que pour les sols résidentiels ou commerciaux peu sollicités qui ne nécessitent pas de caractéristiques antiglisse. La finition semi-polie brillante offre une surface à effet miroir incroyablement éclatante, doublée des légères irrégularités typiques des marbres naturels. La brillance extraordinaire et l'extrême facilité de nettoyage de la surface sont le fruit d'études et de recherches techniques approfondies visant à en garantir la résistance dans le temps. Si le produit est en contact direct avec l'extérieur, prévoir des dispositifs d'absorption de l'humidité et des salissures afin de prévenir la formation de rayures. - Das gelappte Hochglanz-Finish eignet sich als Bodenbelag in nicht stark beanspruchten Wohn- oder Gewerberäumen, die keine Rutschfestigkeit erfordern, sowie als Wandbelag. Das gelappte Hochglanz-Finish bietet eine überraschend helle und reflektierende Oberfläche mit den für Naturmarmor typischen, leichten Unregelmäßigkeiten. Der einzigartige Glanz und die besondere Reinigungsfreundlichkeit der Oberfläche sind Ergebnis eingehender Studien und sorgfältiger technischer Forschungsarbeit, mit denen dauerhafte Beständigkeit gewährleistet wurde. Bei direktem Kontakt mit dem Außenbereich sind Mittel zur Aufnahme von Feuchtigkeit und Schmutz erforderlich, die das Produkt vor Verkratzung schützen. - El acabado Lapeado pulido está indicado para pisos residenciales o comerciales poco esforzados, donde no se requiera un rendimiento antideslizante, también es ideal para revestimientos. El acabado lapeado pulido ofrece una superficie asombrosamente brillante y reflectante, con ligeras irregularidades típicas de los mármoles naturales. La extraordinaria brillantez y la elevada facilidad de limpieza de la superficie es el resultado de extensos estudios técnicos e investigaciones dirigidas a garantizar su resistencia en el tiempo. Si el producto está en contacto directo con el exterior, es necesario utilizar los dispositivos de absorción de la humedad y de la suciedad para evitar que se raye. - Лапатированная глянцевая плитка рекомендована для полов домашних и коммерческих интерьеров с небольшой интенсивностью эксплуатации и для стен. Лапатированная глянцевая поверхность имеет блестящий, почти зеркальный вид с легкими, типичными для природного мрамора неровностями. Блеск и легкая очищаемость являются результатом глубоких исследований, направленных на создание долговечного материала. Если плитка находится в непосредственном контакте с наружной средой, необходимо предусмотреть устройства поглощения влаги и грязи во избежание образования царапин.

## Destination of use | Color-shading



V3 Moderate Variation



ENJOY THE VIDEO



OVERVIEW



IMAGE GALLERY



SURFACE RANGE & TECHNICAL SPECS.



COLLECTION RANGE

TECHNICAL SPECIFICATIONS

MARVEL WORLD



WE CARE





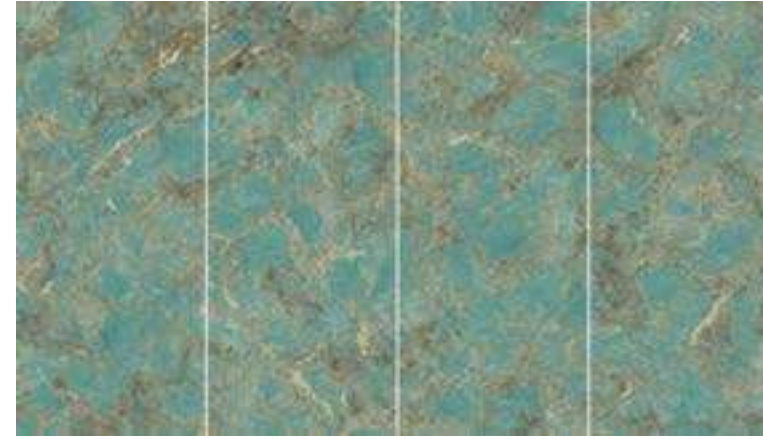
## Porcelain tiles



Marvel Gala Crystal White <sup>(1)</sup> <sup>(2)</sup>  
120x278 cm - 47<sup>1</sup>/<sub>4</sub>"x109<sup>1</sup>/<sub>2</sub>"



Marvel Gala Crystal White  
162x324 cm - 63<sup>3</sup>/<sub>4</sub>"x127<sup>1</sup>/<sub>2</sub>"



Marvel Gala Amazonite <sup>(1)</sup> <sup>(2)</sup>  
120x278 cm - 47<sup>1</sup>/<sub>4</sub>"x109<sup>1</sup>/<sub>2</sub>"



Marvel Gala Desert Soul <sup>(1)</sup> <sup>(2)</sup>  
120x278 cm - 47<sup>1</sup>/<sub>4</sub>"x109<sup>1</sup>/<sub>2</sub>"



Marvel Gala Desert Soul  
162x324 cm - 63<sup>3</sup>/<sub>4</sub>"x127<sup>1</sup>/<sub>2</sub>"



Marvel Gala Calacatta Black <sup>(1)</sup> <sup>(2)</sup>  
120x278 cm - 47<sup>1</sup>/<sub>4</sub>"x109<sup>1</sup>/<sub>2</sub>"



Marvel Gala Exotic Green <sup>(1)</sup> <sup>(2)</sup>  
120x278 cm - 47<sup>1</sup>/<sub>4</sub>"x109<sup>1</sup>/<sub>2</sub>"



Marvel Gala Exotic Green  
162x324 cm - 63<sup>3</sup>/<sub>4</sub>"x127<sup>1</sup>/<sub>2</sub>"



<sup>(1)</sup> The various graphics of the product are distributed randomly in the boxes, without the possibility of choosing between the available patterns. - All'interno delle casse, le varie grafiche del prodotto sono distribuite in modo casuale, senza possibilità di scelta tra i pattern disponibili. - À l'intérieur des caisses, les différents graphismes du produit sont distribués en mode aléatoire, sans possibilité de choix entre les motifs disponibles. - Die Kisten enthalten die verschiedenen Grafiken des Artikels nach dem Zufallsprinzip, ohne dass Sie zwischen den einzelnen Motiven wählen können. - En el interior de las cajas, los distintos gráficos de los productos se distribuyen de forma aleatoria, sin que se pueda elegir el patrón disponible. - Рисунки распределены в ящиках в случайном порядке, без возможности выбора из доступных рисунков.

<sup>(2)</sup> Minor misalignments in the continuity of the veins between different graphics is normal for this type of product. - Eventuali piccoli disallineamenti nella continuità delle venature tra grafiche diverse sono una caratteristica intrinseca di questa tipologia di prodotto. - Les éventuels petits désalignements de la continuité des veinures entre différents graphismes sont une caractéristique intrinsèque de cette typologie de produit. - Eventuelle kleine Versätze im Verlauf der Äderungen zwischen unterschiedlichen Grafiken sind charakteristisch für dieses Produkt. - Cualquier pequeño desalineado en la continuidad de las vetas entre diferentes gráficos es una característica intrínseca de este tipo de productos. - Возможные небольшие смещения рисунка прожилок на стыке плит являются характеристикой данного вида изделий.

INDEX



ENJOY THE VIDEO



OVERVIEW



IMAGE GALLERY



SURFACE RANGE & TECHNICAL SPECS.



COLLECTION RANGE

TECHNICAL SPECIFICATIONS

MARVEL WORLD



WE CARE







Porcelain tiles - Rectified monocaliber

Gres porcellanato - Rettificato monocalibro

Compliant with standards EN 14411 annex G group Bla  
 Compliant with standards ISO 13006 annex G group Bla  
 Conforme alla norma EN 14411 Appendice G gruppo Bla  
 Conforme alla norma ISO 13006 Appendice G gruppo Bla

120x278 cm - 47 1/8" x 109 1/2" ± 6 mm  
 120x120 cm - 47 1/8" x 47 1/8" ± 9 mm  
 60x120 cm - 23 3/8" x 47 1/8" ± 9 mm

Technical features Caratteristiche tecniche	Test Method Metodo di prova	Requirements for nominal size N / Requisiti per dimensione nominale N			Porcelain tiles	
		7 cm ≤ N < 15 cm	N ≥ 15 cm		Polished ± 9 mm	Polished ± 6 mm
		MM	(%)	(mm)		
<b>Length and width</b> Lunghezza e larghezza		± 0.9 (*) Non-rect. ± 0.4 (*) Rect.	± 0.6 (*) Non-rect. ± 0.3 (*) Rect.	± 2.0 (*) Non-rect. ± 1.0 (*) Rect.	<b>Suitable for</b> Conforme	<b>Suitable for</b> Conforme
<b>Thickness</b> Spessore		± 0.5 (**)	± 5 (**)	± 0.5 (**)	<b>Suitable for</b> Conforme	<b>Suitable for</b> Conforme
<b>Straightness of sides</b> Rettilineità degli spigoli	ISO 10545-2	± 0.8 (***) Non-rect. ± 0.4 (***) Rect.	± 0.5 (***) Non-rect. ± 0.3 (***) Rect.	± 1.5 (***) Non-rect. ± 0.8 (***) Rect.	<b>Suitable for</b> Conforme	<b>Suitable for</b> Conforme
<b>Rectangularity</b> (Measurement only on short edges when L/l ≥ 3) Ortogonalità (Misurazione da condurre solo sui lati corti quando L/l ≥ 3)		± 0.8 (****) Non-rect. ± 0.4 (****) Rect.	± 0.5 (****) Non-rect. ± 0.3 (****) Rect.	± 2.0 (****) Non-rect. ± 1.5 (****) Rect.	<b>Suitable for</b> Conforme	<b>Suitable for</b> Conforme
<b>Surface flatness</b> Planarità	ISO 10545-2	c.c. ± 0.8 Non-rect. c.c. ± 0.6 Rect. e.c. ± 0.8 Non-rect. e.c. ± 0.6 Rect. w. ± 0.8 Non-rect. w. ± 0.6 Rect.	c.c. ± 0.5 Non-rect. c.c. ± 0.4 Rect. e.c. ± 0.5 Non-rect. e.c. ± 0.4 Rect. w. ± 0.5 Non-rect. w. ± 0.4 Rect.	c.c. ± 2.0 Non-rect. c.c. ± 1.8 Rect. e.c. ± 2.0 Non-rect. e.c. ± 1.8 Rect. w. ± 2.0 Non-rect. w. ± 1.8 Rect.	<b>Suitable for</b> Conforme	<b>Suitable for</b> Conforme
<b>Water absorption (m% by mass)</b> Massa d'acqua assorbita (come % della massa)	ISO 10545-3	E <sub>v</sub> ≤ 0.5% Individual Maximum 0.6% E <sub>v</sub> ≤ 0.5% Valore massimo singolo 0,6%			≤ 0.1 %	≤ 0.1 %
	ASTM C373-18	Requirement ANSI A137.1 Water absorption max ≤ 0.5%			≤ 0.5 %	≤ 0.5 %
<b>Breaking strength</b> Sforzo di rottura	ISO 10545-4	S ≥ 700N (for thickness < 7.5 mm - per spessore < 7,5 mm ) S ≥ 1300N (for thickness ≥ 7.5 mm - per spessore ≥ 7,5 mm ) R ≥ 35 N/mm <sup>2</sup>			S ≥ 1500 N	S ≥ 1000 N
<b>Modulus of rupture</b> Resistenza alla flessione					R ≥ 40 N/mm <sup>2</sup>	R ≥ 40 N/mm <sup>2</sup>
<b>Bending strength and breaking load</b> Resistenza a flessione e al carico di rottura (4)(5)	EN 1339 Annex F				-	-
<b>Impact resistance, as coefficient of restitution</b> Resistenza all'impatto, espresso come coefficiente di restituzione	ISO 10545-5	Declared value Valore dichiarato			≥ 0,55	≥ 0,55
<b>Mohs hardness</b> Durezza Mohs	EN 101				5	5
<b>Resistance to deep abrasion of unglazed tiles (removed volume)</b> Resistenza all'abrasione profonda delle piastrelle non smaltate (volume materiale asportato)	ISO 10545-6	≤ 175 mm <sup>3</sup>			≤ 150 mm <sup>3</sup>	≤ 150 mm <sup>3</sup>
<b>Coefficient of thermal linear expansion</b> Coefficiente di dilatazione termica lineare	ISO 10545-8	Declared value Valore dichiarato			≤ 7MK <sup>-1</sup>	≤ 7MK <sup>-1</sup>
<b>Thermal shock resistance</b> Resistenza agli sbalzi termici	ISO 10545-9	Pass according to EN ISO 10545-1 Test superato in accordo con ISO 10545-1			<b>Resistant</b> Resiste	<b>Resistant</b> Resiste
<b>Moisture expansion (in mm/m)</b> Dilatazione all'umidità (in mm/m)	ISO 10545-10	Declared value Valore dichiarato			≤ 0,01% (0,1mm/m)	≤ 0,01% (0,1mm/m)
<b>Frost resistance</b> Resistenza al gelo	ISO 10545-12	Pass according to EN ISO 10545-1 Test superato in accordo con ISO 10545-1			<b>Resistant</b> Resiste	<b>Resistant</b> Resiste
<b>Bond strength/adhesion for improved cementitious adhesives</b> Adesione a trazione con adesivi cementizi migliorati	EN 1348	Declared value Valore dichiarato			≥ 1,0 N/mm <sup>2</sup> (Class C2 - EN 12004)	≥ 1,0 N/mm <sup>2</sup> (Class C2 - EN 12004)
<b>Reaction to fire</b> Reazione al fuoco	-	Class A1 or A1 <sub>f</sub> Classe A1 oppure A1 <sub>f</sub>			A1 - A1 <sub>f</sub>	A1 - A1 <sub>f</sub>
<b>Resistance to household chemicals and swimming pool salts</b> Resistenza ai prodotti chimici di uso domestico e agli additivi per piscina		Minimum Class B Classe minima B			A	A
<b>Resistance to low concentrations of acids and alkalis</b> Resistenza a basse concentrazioni di acidi e alcali	ISO 10545-13	Declared Class Classe dichiarata			LA	LA
<b>Resistance to high concentrations of acids and alkalis</b> Resistenza ad alte concentrazioni di acidi e alcali		Declared Class Classe dichiarata			-	-
<b>Resistance to staining, for unglazed tiles</b> Resistenza alle macchie per piastrelle non smaltate	ISO 10545-14	Declared Class Classe dichiarata			5	5
<b>Shoof Ramp Test</b> Metodo della rampa "calzato"	EN 16165 ANNEX B (EX DIN 51130)	Declared value Valore dichiarato			N.C.	N.C.
<b>Barefoot Ramp Test</b> Metodo della rampa a piedi nudi	EN 16165 ANNEX A (EX DIN 51097)	Declared value Valore dichiarato			0	0
	BS 7976	PTV ≥ 36 classifies the surface as "low slip risk"			≥ 36 Dry ≤ 24 Wet	≥ 36 Dry ≤ 24 Wet
<b>Pendulum Friction Test</b> Metodo del Pendolo	AS 4586	Declared Classification of the new pedestrian surface materials according to the Pendulum Test			-	-
	UNE-ENV 12633 - UNE 41901:2017 EX	Declared value Valore dichiarato			-	-
<b>Coefficient of friction (COF)</b> Coefficiente di attrito	B.C.R.A. Rep. CEC/81	D. M. 236/89 del 14/06/89 μ > 0,40 per elemento scivolante cuoio su pavimentazione asciutta μ > 0,40 per elemento scivolante gomma dura su pavimentazione bagnata			> 0,40 Asciutto < 0,40 Bagnato	> 0,40 Asciutto < 0,40 Bagnato
<b>Dynamic coefficient of friction (DCOF)</b> Coefficiente di attrito dinamico	ANSI A 326.3				Dry DCOF ≥ 0,42	Dry DCOF ≥ 0,42



© Ceramiche Atlas Concorde

ENJOY THE VIDEO



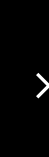
OVERVIEW



IMAGE GALLERY



SURFACE RANGE & TECHNICAL SPECS.



COLLECTION RANGE  
 TECHNICAL SPECIFICATIONS

MARVEL WORLD



WE CARE



THANKS TO

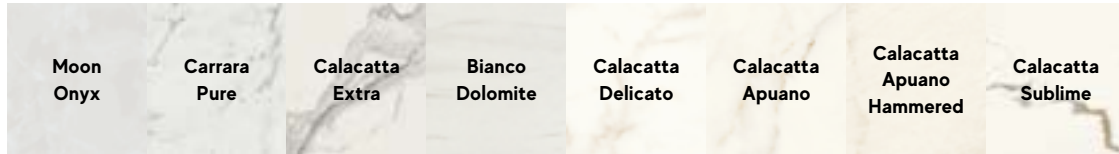
Gallotti&Radice

www.gallottiradice.it



# White

RANGE SUMMARY <sup>(1)</sup> <sup>(5)</sup>



## PORCELAIN TILES

<b>160x320 cm</b> 63"x126"	± 6 mm			Polished Matte	Polished				
<b>120x278 cm</b> 47 1/4"x109 1/2"	± 6 mm		Polished Matte	Polished * <sup>(2)</sup> <sup>(4)</sup> Matte	Polished Matte	Polished	Polished Silk		Polished <sup>(4)</sup> Silk <sup>(4)</sup>
<b>120x240 cm</b> 47 1/4"x94 1/2"	± 9 mm		Polished	Polished	Polished	Polished	Polished		Polished
<b>160x160 cm</b> 63"x63"	± 6 mm			Polished Matte	Polished				
<b>120x120 cm</b> 47 1/4"x47 1/4"	± 9 mm		Polished Matte <sup>(5)</sup>	Polished Matte <sup>(5)</sup>	Polished Matte <sup>(5)</sup>	Polished Matte <sup>(5)</sup>	Polished Silk		Polished Silk
<b>60x120 cm</b> 23 5/8"x47 1/4"	± 9 mm		Polished Matte <sup>(5)</sup>	Polished Matte <sup>(5)</sup>	Polished Matte <sup>(5)</sup>	Polished Matte <sup>(5)</sup>	Polished Matte <sup>(5)</sup>	Matte <sup>(5)</sup>	Polished Matte <sup>(5)</sup>
<b>75x150 cm</b> 29 1/2"x59"	± 9 mm		Polished	Polished Matte <sup>(5)</sup>	Polished	Polished Silk	Polished Silk		Polished Silk
<b>75x75 cm</b> 29 1/2"x29 1/2"	± 9 mm	Polished Matte <sup>(5)</sup>	Polished	Polished Matte <sup>(5)</sup>	Polished	Polished Silk	Polished Silk		Polished Silk
<b>37,5x75 cm</b> 14 3/4"x29 1/2"	± 9 mm					Polished			
<b>60x60 cm</b> 23 5/8"x23 5/8"	± 9 mm	Polished Matte <sup>(5)</sup>	Polished Matte <sup>(5)</sup>	Polished Matte <sup>(5)</sup>	Polished Matte <sup>(5)</sup>	Polished   Silk Matte <sup>(5)</sup>	Polished Matte <sup>(5)</sup>		Polished Matte <sup>(5)</sup>
<b>30x60 cm</b> 11 3/4"x23 5/8"	± 9 mm	Polished Matte <sup>(5)</sup>	Polished Matte <sup>(5)</sup>	Polished Matte <sup>(5)</sup>	Polished Matte <sup>(5)</sup>	Silk	Polished Matte <sup>(5)</sup>		Polished Matte <sup>(5)</sup>

## OUTDOOR AND WET AREAS

<b>60x120 cm</b> 23 5/8"x47 1/4"	± 9 mm								
<b>60x120 cm</b> 23 5/8"x47 1/4"	± 20 mm							Outdoor	

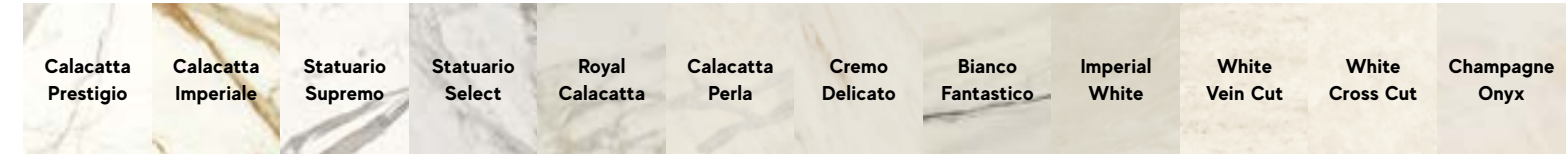
## WALL TILES

<b>50x120 cm</b> 19 5/8"x47 1/4"	± 8,5 mm		Shiny	Shiny	Shiny	Silk			
<b>40x80 cm</b> 15 3/4"x31 1/2"	± 8,5 mm		Shiny	Shiny	Shiny	Shiny			
<b>30,5x91,5 cm</b> 12"x36"	± 8,5 mm	Shiny		Shiny					
<b>30,5x56 cm</b> 12"x22"	± 8,5 mm	Shiny		Shiny					
<b>8x31,5 cm</b> 3 1/8"x12 1/2"	± 8,5 mm		Shiny	Shiny					

## SLABS FOR FURNITURE

<b>162x324 cm</b> 63 3/4"x127 1/2" > Non rectified	± 6 mm			Polished *   Silk *					
	± 12 mm		Silk	Polished *   Silk *	Polished	Silk	Polished		
	± 20 mm			Polished   Silk					

■ Natura-vein tech \* Also available in bookmatch<sup>(3)</sup> For notes <sup>(1)</sup>-<sup>(2)</sup>-<sup>(4)</sup>-<sup>(5)</sup> see page 97



## PORCELAIN TILES

Polished <sup>(4)</sup>		Polished <sup>(4)</sup>				Polished			
Polished * <sup>(4)</sup> Silk <sup>(4)</sup>	Polished <sup>(4)</sup>	Polished * <sup>(4)</sup> Silk <sup>(4)</sup>	Polished	Polished	Polished Silk	Polished Matte	Polished Matte		Matte
Polished	Polished	Polished	Polished	Polished	Polished	Polished	Polished		Matte
Polished		Polished				Polished			
Polished Matte <sup>(5)</sup>	Polished Matte <sup>(5)</sup>	Polished Matte <sup>(5)</sup>	Polished	Polished	Polished Silk	Polished Matte <sup>(5)</sup>	Polished Matte <sup>(5)</sup>	Polished	Matte <sup>(5)</sup>
Polished Matte <sup>(5)</sup>	Polished Matte <sup>(5)</sup>	Polished Matte <sup>(5)</sup>			Polished Matte <sup>(5)</sup>	Polished Matte <sup>(5)</sup>	Polished Matte <sup>(5)</sup>		Matte <sup>(5)</sup> Matte <sup>(5)</sup>
Polished Silk	Polished * Silk	Polished * Silk	Polished *	Polished	Polished Silk	Polished	Polished Matte <sup>(5)</sup>	Polished	Polished
Polished Silk	Polished Silk	Polished Silk	Polished	Polished	Polished Silk	Polished	Polished Matte <sup>(5)</sup>	Polished	Polished Matte <sup>(5)</sup>
Polished	Polished	Polished					Polished Matte <sup>(5)</sup>		
Polished   Silk Matte <sup>(5)</sup>	Polished   Silk Matte <sup>(5)</sup>	Polished   Silk Matte <sup>(5)</sup>	Polished Matte <sup>(5)</sup>	Polished Matte <sup>(5)</sup>	Polished Matte <sup>(5)</sup>	Polished Matte <sup>(5)</sup>	Polished Matte <sup>(5)</sup>	Polished Matte <sup>(5)</sup>	Matte <sup>(5)</sup> Polished Matte <sup>(5)</sup>
Silk	Silk	Silk	Polished Matte <sup>(5)</sup> Textured	Polished Matte <sup>(5)</sup>	Polished Matte <sup>(5)</sup>	Polished Matte <sup>(5)</sup> Textured		Polished Matte <sup>(5)</sup>	Polished Matte <sup>(5)</sup>

## OUTDOOR AND WET AREAS

									Grip	Grip
									Outdoor	

## WALL TILES

Silk	Silk	Silk	Shiny	Shiny		Shiny	Shiny	Shiny		
Shiny	Shiny	Shiny	Shiny	Shiny		Shiny		Shiny		Shiny
			Shiny			Shiny				Shiny
										Shiny

## SLABS FOR FURNITURE

	Silk *									
Silk *	Polished *   Satin   Silk *	Satin *   Silk	Polished *	Polished *					Hammered	
	Polished   Silk ■	Polished Silk ■								



The constant research of Atlas Concorde Laboratories has led to the creation of Sensitech, the porcelain tile surface for interiors made using a production method patented in Italy that combines superior slip-resistance with an unprecedented tactile softness, guaranteeing ease of cleaning and maintenance. Dalla costante ricerca dei Laboratori Atlas Concorde nasce Sensitech, la superficie in gres porcellanato per interni realizzata con metodo produttivo brevettato in Italia, che associa elevate prestazioni di resistenza allo scivolamento ad un'inedita morbidezza tattile, garantendo facilità di pulizia e manutenzione.



ENJOY THE VIDEO



OVERVIEW



IMAGE GALLERY



SURFACE RANGE & TECHNICAL SPECS.



MARVEL WORLD



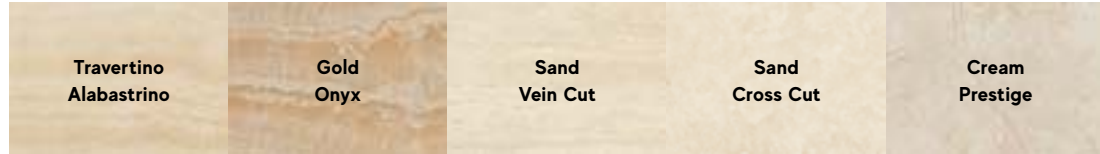
WE CARE





# Beige & Brown

RANGE SUMMARY (1) (5)



## PORCELAIN TILES

<b>160x320 cm</b> 63"x126"	± 6 mm					
<b>120x278 cm</b> 47 1/4"x109 1/2"	± 6 mm		Matte			
<b>120x240 cm</b> 47 1/4"x94 1/2"	± 9 mm		Matte			
<b>160x160 cm</b> 63"x63"	± 6 mm					
<b>120x120 cm</b> 47 1/4"x47 1/4"	± 9 mm			Matte (S)		
<b>60x120 cm</b> 23 5/8"x47 1/4"	± 9 mm		Matte (S)	Matte (S)		
<b>75x150 cm</b> 29 1/2"x59"	± 9 mm	Polished	Polished			Polished
<b>75x75 cm</b> 29 1/2"x29 1/2"	± 9 mm	Polished	Polished			Polished
<b>37,5x75 cm</b> 14 3/4"x29 1/2"	± 9 mm					
<b>60x60 cm</b> 23 5/8"x23 5/8"	± 9 mm	Polished Matte (S)			Matte (S)	Polished Matte (S)
<b>30x60 cm</b> 11 3/4"x23 5/8"	± 9 mm	Polished Matte (S)				Polished Matte (S)

## OUTDOOR AND WET AREAS

<b>60x120 cm</b> 23 5/8"x47 1/4"	± 9 mm		Grip	Grip		
<b>60x120 cm</b> 23 5/8"x47 1/4"	± 20 mm		Outdoor			

## WALL TILES

<b>50x120 cm</b> 19 5/8"x47 1/4"	± 8,5 mm					Shiny
<b>40x80 cm</b> 15 3/4"x31 1/2"	± 8,5 mm	Shiny				Shiny
<b>30,5x91,5 cm</b> 12"x36"	± 8,5 mm	Shiny				
<b>30,5x56 cm</b> 12"x22"	± 8,5 mm					
<b>8x31,5 cm</b> 3 1/8"x12 1/2"	± 8,5 mm					

## SLABS FOR FURNITURE

	± 6 mm					
<b>162x324 cm</b> 63 3/4"x127 1/2"	± 12 mm		Hammered			
> Non rectified	± 20 mm					

\* Also available in bookmatch<sup>(B)</sup> For notes <sup>(1)</sup>-<sup>(2)</sup>-<sup>(4)</sup>-<sup>(5)</sup> see page 97



## PORCELAIN TILES

Matte						Polished
Matte						
	Matte (S)			Polished		Polished
Matte (S)	Matte (S)					
				Polished		Polished
		Polished Matte (S)		Polished	Polished Matte (S)	Polished
	Matte (S)	Polished Matte (S)		Polished Matte (S)	Polished Matte (S)	Polished Matte (S)
		Polished Matte (S)		Polished Matte (S)	Polished Matte (S)	Polished Matte (S)

## OUTDOOR AND WET AREAS

Grip	Grip					
Outdoor						

## WALL TILES

				Shiny		
			Shiny	Shiny		Shiny
		Shiny			Shiny	
		Shiny			Shiny	

## SLABS FOR FURNITURE

Hammered						



The constant research of Atlas Concorde Laboratories has led to the creation of Sensitech, the porcelain tile surface for interiors made using a production method patented in Italy that combines superior slip-resistance with an unprecedented tactile softness, guaranteeing ease of cleaning and maintenance. Dalla costante ricerca dei Laboratori Atlas Concorde nasce Sensitech, la superficie in gres porcellanato per interni realizzata con metodo produttivo brevettato in Italia, che associa elevate prestazioni di resistenza allo scivolamento ad un'inedita morbidezza tattile, garantendo facilità di pulizia e manutenzione.



ENJOY THE VIDEO



OVERVIEW



IMAGE GALLERY



SURFACE RANGE & TECHNICAL SPECS.



MARVEL WORLD



WE CARE









# Precious

RANGE SUMMARY (1) (5)



## PORCELAIN TILES

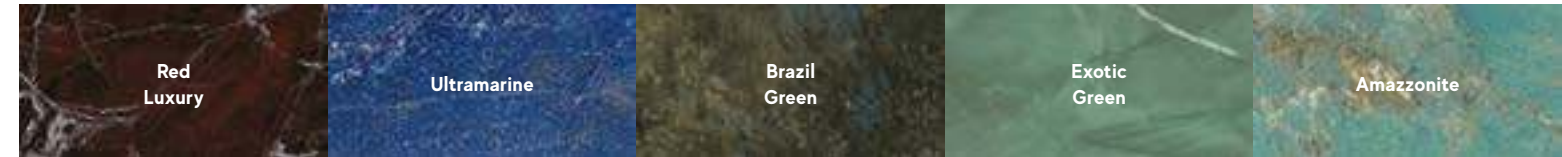
<b>160x320 cm</b> 63"x126"	± 6 mm				
<b>120x278 cm</b> 47 1/4"x109 1/2"	± 6 mm	Polished	Polished		
<b>120x240 cm</b> 47 1/4"x94 1/2"	± 9 mm				
<b>160x160 cm</b> 63"x63"	± 6 mm				
<b>120x120 cm</b> 47 1/4"x47 1/4"	± 9 mm	Polished	Polished		
<b>60x120 cm</b> 23 5/8"x47 1/4"	± 9 mm	Polished	Polished		
<b>75x150 cm</b> 29 1/2"x59"	± 9 mm			Polished	Polished *
<b>75x75 cm</b> 29 1/2"x29 1/2"	± 9 mm			Polished	
<b>37,5x75 cm</b> 14 3/4"x29 1/2"	± 9 mm				
<b>60x60 cm</b> 23 5/8"x23 5/8"	± 9 mm				
<b>30x60 cm</b> 11 3/4"x23 5/8"	± 9 mm				

## WALL TILES

<b>50x120 cm</b> 19 5/8"x47 1/4"	± 8,5 mm				Shiny
<b>40x80 cm</b> 15 3/4"x31 1/2"	± 8,5 mm				
<b>30,5x91,5 cm</b> 12"x36"	± 8,5 mm				
<b>30,5x56 cm</b> 12"x22"	± 8,5 mm				
<b>8x31,5 cm</b> 3 1/8"x12 1/2"	± 8,5 mm				

## SLABS FOR FURNITURE

	± 6 mm				
<b>162x324 cm</b> 63 3/4"x127 1/2"	± 12 mm	Polished * Silk *	Polished * Silk *		
> Non rectified	± 20 mm	Polished	Polished		



## PORCELAIN TILES

	Polished		Polished	Polished	
			Polished	Polished	
			Polished	Polished	
Polished	Polished	Polished			
Polished	Polished	Polished			

## WALL TILES

	Shiny	Shiny			

## SLABS FOR FURNITURE

			Polished * Silk *	Polished * Silk *	

\* Also available in bookmatch® For notes 1-2-4-5 see page 97



ENJOY THE VIDEO



OVERVIEW



IMAGE GALLERY



SURFACE RANGE & TECHNICAL SPECS.



MARVEL WORLD



WE CARE





**Marvel** Calacatta Extra, Moon Onyx, Champagne Onyx, Beige Mystery, Bronze Luxury, Silver Dream, Grey Stone



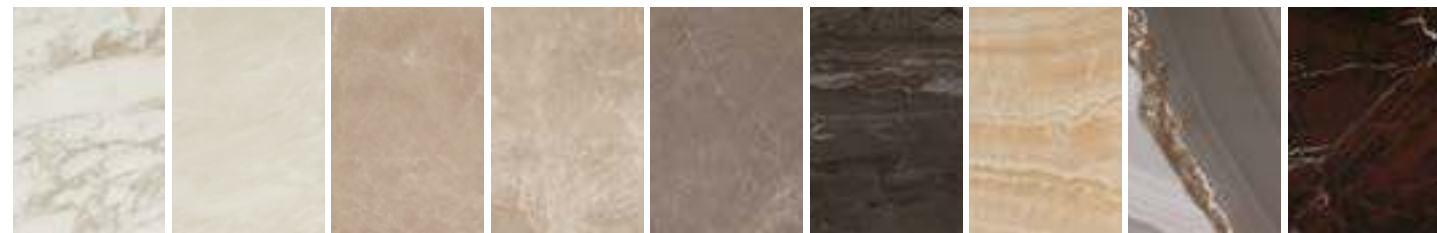
**Marvel Pro** Statuario Select, Crema Delicato, Travertino Alabastrino, Travertino Silver, Grey Fleury, Noir St. Laurent



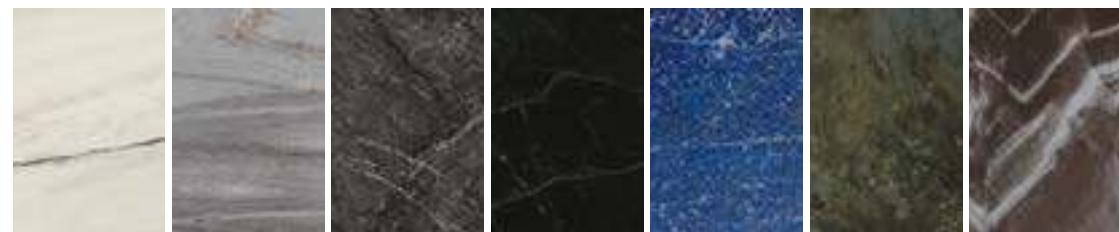
**Marvel Stone** Carrara Pure, Bianco Dolomite, Cream Prestige, Bardiglio Grey, Nero Marquina



**Marvel Edge** Royal Calacatta, Imperial White, Elegant Sable, Gris Clair, Gris Supreme, Absolute Brown, Gold Onyx, Agata Azul, Red Luxury



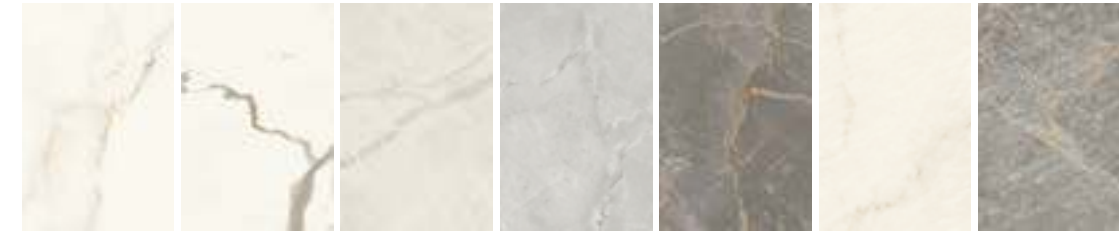
**Marvel Dream** Bianco Fantastico, Morning Sky, Grigio Intenso, Black Atlantis, Ultramarine, Brazil Green, Crystal Beauty



**Marvel Shine** Calacatta Delicato, Calacatta Prestigio, Statuario Supremo, Calacatta Imperiale



**Marvel X** Calacatta Apuano, Calacatta Sublime, Calacatta Perla, Grey Cloud, Fior di Bosco, Calacatta Apuano Hammered, Fior di Bosco Hammered



**Marvel Gala** White Vein Cut, White Cross Cut, Sand Vein Cut, Sand Cross Cut, Pearl Vein Cut, Pearl Cross Cut



**Marvel Gala** Crystal White, Desert Soul, Amazonite, Exotic Green, Calacatta Black



To learn more about the complete range of the collections, please refer to the catalogue of the series. - Per conoscere la gamma completa delle collezioni si invita a consultare il catalogo di serie. - Consulter le catalogue des séries pour découvrir la gamme complète des collections. - Die gesamte Produktpalette der Kollektionen finden Sie im Katalog der jeweiligen Serie. - Para conocer la gama completa de las colecciones, rogamos consultar el catalogo de serie. - Полная гамма коллекций представлена в соответствующих каталогах серий.

- The various graphics of the product are distributed randomly in the boxes, without the possibility of choosing between the available patterns.** - All'interno delle casse, le varie grafiche del prodotto sono distribuite in modo casuale, senza possibilità di scelta tra i pattern disponibili. - A l'intérieur delle caisses, les différents graphismes du produit sont distribués en mode aléatoire, sans possibilité de choix entre les motifs disponibles. - Die Kisten enthalten die verschiedenen Grafiken des Artikels nach dem Zufallsprinzip, ohne dass Sie zwischen den einzelnen Motiven wählen können. - En el interior de las cajas, los distintos gráficos de los productos se distribuyen de forma aleatoria, sin que se pueda elegir el patrón disponible. - Рисунки распределены в ящиках в случайном порядке, без возможности выбора из доступных рисунков.
- Calacatta Extra Endless is composed of four graphics with vein continuity, but are distributed randomly in the boxes, without the possibility of choosing between the available patterns.** - Calacatta Extra Endless è composto da quattro grafiche con continuità di vena, ma all'interno delle casse queste sono distribuite in modo casuale, senza possibilità di scelta tra i pattern disponibili. - Calacatta Extra Endless est composé de quatre graphismes avec les veines en continuité, mais celles-ci sont distribuées en mode aléatoire à l'intérieur delle caisses, sans possibilité de choix entre les motifs disponibles. - Calacatta Extra Endless besteht aus vier Grafiken mit durchlaufender Aderung, diese sind jedoch in den Kisten nach dem Zufallsprinzip enthalten, ohne dass Sie zwischen den einzelnen Motiven wählen können. - Calacatta Extra Endless se compone de cuatro gráficos con continuidad de vetas, pero en el interior de las cajas están distribuidos de forma aleatoria, sin que se pueda elegir el patrón disponible. - Calacatta Extra Endless состоит из четырех рисунков с непрерывными прожилками, но они распределены в ящиках в случайном порядке, без возможности выбора из доступных рисунков.
- Minor misalignments in the continuity of the veins between different graphics is normal for this type of product.** - Eventuali piccoli disallineamenti nella continuità delle venature tra grafiche diverse sono una caratteristica intrinseca di questa tipologia di prodotto. - Les éventuels petits désalignements de la continuité des veines entre différents graphismes sont une caractéristique intrinsèque de cette typologie de produit. - Eventuelle kleine Versätze im Verlauf der Aderungen zwischen unterschiedlichen Grafiken sind charakteristisch für dieses Produkt. - Cualquier pequeño desalineado en la continuidad de las vetas entre diferentes gráficos es una característica intrínseca de este tipo de productos. - Возможные небольшие смещения рисунка прожилок на стыке плит являются характеристикой данного вида изделий.
- The Endless Kit contains all the graphics of the product with vein continuity, ensuring that all the numbered faces in the composition can be found in a single box. The number of the graphic - G1, G2, G3, etc - is printed on the side and indicated with an adhesive label placed on the slab. To reconstruct the surface with continuous veins, simply lay the tiles in numerical progression: G1, G2, G3 and so on.** - Il Kit Endless contiene tutte le grafiche del prodotto con continuità di vena, garantisce in un'unica cassa tutte le facce numerate che creano la composizione. Il numero della grafica, indicato come G1, G2, G3, ecc. viene stampato sulla costa del lato 278 e indicato con un adesivo posto sulla lastra. Per ricostruire la superficie con continuità di vena è sufficiente posare le lastre in progressione numerica: G1, G2, G3, ecc. - Le Kit Endless contient tous les graphismes du produit avec la continuité des veines, il garantit, dans une seule caisse, toutes les faces numérotées qui créent la composition. Le numéro du graphisme, indiqué comme G1, G2, G3, etc. est imprimé sur le bord du côté 278 et indiqué avec un adhésif apposé sur la dalle. Pour reconstruire la surface avec les veines en continuité, il suffit de poser les dalles en progression numérique: G1, G2, G3, etc. - Kit Endless umfasst alle Grafiken des Produkts mit durchlaufender Aderung und damit alle nummerierten Oberflächen, aus denen sich die Komposition zusammensetzt, garantiert in einer einzigen Kiste. Die Nummer der Grafik, d.h. G1, G2, G3, etc., ist auf der Kante der 278 cm langen Seite aufgedruckt und auch mit einem Klebeetikett auf der Platte angegeben. Um das Gesamtbild mit durchlaufender Aderung zusammenzusetzen, werden die Platten einfach in numerischer Reihenfolge verlegt: G1, G2, G3 usw. - El Kit Endless contiene todas las caras del producto con continuidad de vetas, garantiza contar en una sola caja con todas las caras numeradas que forman la composición. El número del gráfico, indicado como G1, G2, G3, etc., está impreso en el borde del lado 278 y se indica mediante un adhesivo en la losa. Para reconstruir la superficie con continuidad de vetas, basta con colocar las losas en progresión numérica: G1, G2, G3, etc. - Kit Endless - это комплект, который содержит все плиты, необходимые для составления композиции с непрерывным рисунком прожилок. Все плиты пронумерованы и находятся в одном ящике. Номер плиты, обозначенный как G1, G2, G3 и т.д., напечатан на торце грани 278 и указан также на наклейке в углу плиты. Чтобы при облицовке создать рисунок с непрерывающимися прожилками, необходимо просто уложить плиты в последовательности G1, G2, G3 и т.д.
- A polished finish is recommended for low-stress residential or commercial floors where anti-slip performance is not required. The surface's shine and superior ease of cleaning are the result of in-depth studies and extensive technical research aimed at ensuring its durability over time. If the product is in direct contact with the outside, use moisture and dirt absorption devices to prevent scratches. Small irregularities on the surface are an intrinsic feature of the product, intended to imitate the surfaces of natural stone.** La finitura lappata è indicata per pavimenti residenziali o commerciali poco sollecitati, laddove non siano richieste prestazioni antiscivolo. La lucentezza e l'elevata facilità di pulizia della superficie sono frutto di studi approfonditi e accurate ricerche tecniche volte a garantirne la persistenza nel tempo. Se il prodotto è a diretto contatto con l'esterno, prevedere dei dispositivi di assorbimento dell'umidità e dello sporco per prevenire la formazione di graffi. Piccole irregolarità superficiali sono una caratteristica intrinseca del prodotto, volte ad imitare le superfici delle pietre naturali. - La finition semi-polie est indiquée pour les sols résidentiels ou commerciaux à faibles contraintes, où la caractéristique antidérapante n'est pas nécessaire. La brillance et la grande facilité de nettoyage de la surface sont le résultat d'études approfondies et de recherches techniques précises visant à assurer sa pérennité dans le temps. Si le produit est en contact direct avec l'extérieur, prévoir des dispositifs d'absorption de l'humidité et des poussières pour prévenir la formation de rayures. Les petites irrégularités superficielles sont une caractéristique intrinsèque du produit et visent à imiter la surface de la pierre naturelle. - Die Oberflächenversion Gelappt eignet sich für Bodenbeläge in Wohnbereichen bzw. in gering beanspruchten Gewerberäumen, wenn keine Rutschfestigkeit erforderlich ist. Der Glanz und die einfache Reinigung der Oberfläche sind das Resultat eingehender technischer Studien, mit denen die langfristige Beständigkeit sichergestellt wurde. Kommt das Produkt direkt mit der externen Umgebung in Kontakt, so sind Feuchtigkeit und Schmutz mit geeigneten Mitteln aufzunehmen, um Kratzer zu vermeiden. Kleine Unregelmäßigkeiten der Oberflächen sind typisch für das Produkt, das die Oberflächen von Natursteinen nachempfunden ist. - El acabado lapado es adecuado para pavimentos residenciales o comerciales con poco tráfico, donde no se requiere un efecto antideslizante. El brillo y la gran facilidad de limpieza de la superficie son el resultado de profundos estudios e investigaciones técnicas precisas para asegurar su persistencia en el tiempo. Si el producto está en contacto directo con el exterior, proporcionar dispositivos de absorción de humedad y suciedad para evitar arañazos. Pequeñas irregularidades superficiales son una característica intrínseca del producto, diseñadas para imitar las superficies de las piedras naturales. - Лаппированная поверхность рекомендована для полов жилых и коммерческих помещений с невысокой интенсивностью эксплуатации, в которых от покрытия не требуется характеристик сопротивления скольжению. Блеск и легкая очищаемость являются результатом глубоких исследований, направленных на создание долговечного материала. Если плитка находится в непосредственном контакте с наружной средой, необходимо предусмотреть устройства поглощения влаги и грязи во избежание образования царапин. Небольшие неровности поверхности являются характеристикой данного изделия и призваны имитировать поверхность природного камня.







© Ceramiche Atlas Concorde

# We care

- 100 PORCELAIN TILES: A SAFE CHOICE
- 102 ENVIRONMENTAL SUSTAINABILITY
- 104 ETHICAL IDENTITY

INDEX



ENJOY THE VIDEO



OVERVIEW



IMAGE GALLERY



SURFACE RANGE & TECHNICAL SPECS.



MARVEL WORLD



WE CARE



PORCELAIN TILES: A SAFE CHOICE  
ENVIRONMENTAL SUSTAINABILITY  
ETHICAL IDENTITY



# Porcelain tiles: a safe choice.

DISCOVER MORE  
EN | IT | FR | DE | ES | RU

**HYGIENIC**  
Igienico

**FIREPROOF**  
Non brucia

**RECYCLABLE**  
Riciclabile

**VERSATILE**  
Versatile

**SAFE**  
Sicuro

**ECO-FRIENDLY**  
Ama l'ambiente

**EASY TO CLEAN AND DISINFECT**  
Facile da pulire e sanificare

**LONG LASTING**  
Dura a lungo

**RESISTANT**  
Resistente

**ZERO PVC**  
Zero PVC

ENJOY THE VIDEO



OVERVIEW



IMAGE GALLERY



SURFACE RANGE & TECHNICAL SPECS.



MARVEL WORLD



WE CARE





# Environmental sustainability.



## CERTIFICATIONS

### Company / Azienda



### Product / Prodotto



### Product "Declarations" / Dichiarazioni di prodotto



An ecological transition is among the company's industrial priorities. Our plants comply with the most stringent international regulations – fully automated and low-impact – as they are equipped with energy cogeneration systems. A constant commitment to the total reduction of waste and emissions completes the picture of a company oriented towards maximum environmental sustainability.

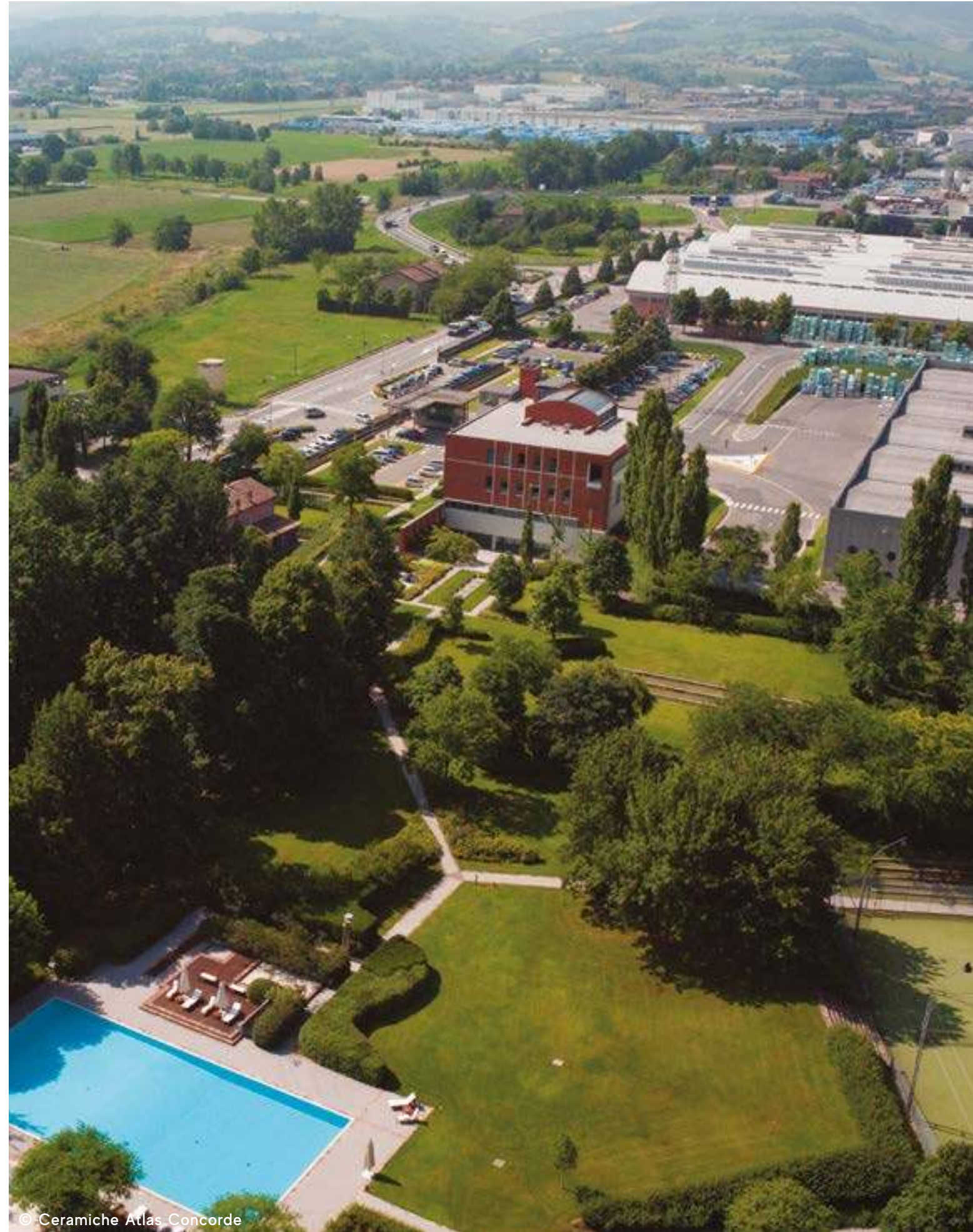
La transizione ecologica è tra le priorità industriali dell'azienda. I nostri impianti sono conformi alle più stringenti normative internazionali, completamente automatizzati e a basso impatto, in quanto dotati di sistemi di cogenerazione energetica. Il costante impegno per la totale riduzione degli sprechi e delle emissioni completano il quadro di un'azienda orientata alla massima sostenibilità ambientale.

La transition écologique est une des priorités industrielles de l'entreprise. Nos installations sont conformes aux réglementations internationales les plus sévères, entièrement automatisées et à faible impact, car équipées de systèmes de cogénération énergétique. L'engagement constant pour la réduction totale du gaspillage et des émissions complète le tableau d'une entreprise engagée pour une meilleure durabilité environnementale.

Der ökologische Wandel gehört zu den Prioritäten der industriellen Strategie des Unternehmens. Unsere Anlagen entsprechen den strengsten internationalen Richtlinien; sie arbeiten vollautomatisch und umweltschonend, denn sie sind mit Kraft-Wärme-Kopplungssystemen ausgerüstet. Ein weiterer Aspekt dieses Unternehmens, das sich ganz der Erreichung maximaler ökologischer Nachhaltigkeit verschrieben hat, ist sein kontinuierliches Engagement für die völlige Eliminierung von Verschwendung und Emissionen.

La transición ecológica está entre las prioridades industriales de la empresa. Nuestras plantas cumplen las normas internacionales más estrictas, totalmente automatizadas y de bajo impacto, ya que están equipadas con sistemas de cogeneración energética. Los esfuerzos constantes por reducir completamente los residuos y las emisiones completan la imagen de una empresa centrada en la máxima sostenibilidad medioambiental.

Экологический переход – один из основных технологических приоритетов компании. Наши производственные процессы отвечают требованиям строжайших международных стандартов, автоматизированы, оказывают минимальное воздействие на окружающую среду, а кроме того, на заводе работает собственная когенерационная установка. А еще мы принимаем меры по сокращению отходов и выбросов, что является еще одним свидетельством ориентации на экологическую устойчивость.



© Ceramiche Atlas Concorde

INDEX



ENJOY THE VIDEO



OVERVIEW



IMAGE GALLERY



SURFACE RANGE & TECHNICAL SPECS.



MARVEL WORLD



WE CARE



PORCELAIN TILES: A SAFE CHOICE  
ENVIRONMENTAL SUSTAINABILITY  
ETHICAL IDENTITY



# Ethical identity.



For Atlas Concorde, being Made in Italy is not just a prestigious certification of style, design, and production excellence, but an identity that involves all aspects of its business. For this reason, we identify with the values expressed by Confindustria Ceramica's ethical code, which guarantee absolute compliance with labor regulations, and with the marks Made in Italy and Ceramics of Italy, which certify the quality of authentic Italian style.

Per Atlas Concorde, Made in Italy non è solo un prestigioso attestato di stile, design ed eccellenza produttiva, ma un modo di essere che coinvolge tutti gli aspetti della propria attività. Per questo ci riconosciamo nei valori espressi dal codice etico di Confindustria Ceramica, che garantiscono il rispetto assoluto delle normative sul lavoro, e nei marchi Made in Italy e Ceramics of Italy, che certificano la qualità dell'autentico stile italiano.

Pour Atlas Concorde, le Made in Italy n'est pas seulement une prestigieuse attestation de style, de design et d'excellence de la production, mais une manière d'être qui prend en compte tous les aspects de notre activité. C'est pourquoi nous nous reconnaissons d'abord dans les valeurs exprimées dans le code éthique de Confindustria Ceramica qui garantissent le respect absolu des réglementations sur le travail, mais aussi dans les labels Made in Italy et Ceramics of Italy qui certifient la qualité du vrai style italien.

Für Atlas Concorde ist das Made in Italy mehr als nur ein prestigevolles Gütezeichen für Stil, Design und exzellente Produktion. Es ist eine Einstellung, die alle Aspekte der Tätigkeit einbezieht. Wir teilen die im Ethikcode des Unternehmerverbands Confindustria Ceramica zum Ausdruck kommenden Werte, welche die strenge Einhaltung der arbeitsrechtlichen Vorschriften garantieren, sowie jene der Gütesiegel Made in Italy und Ceramics of Italy als Garantie von Qualität in authentischem, italienischem Stil.

Para Atlas Concorde, Made in Italy no es sólo un prestigioso certificado de excelencia en estilo, diseño y fabricación, sino una forma de ser que abarca todos los aspectos de su actividad. Por eso nos identificamos con los valores expresados en el código ético de Confindustria Ceramica, que garantizan el respeto absoluto de la normativa laboral, y de las marcas Made in Italy y Ceramics of Italy, que certifican la calidad del auténtico estilo italiano.

«Made in Italy» для Atlas Concorde не просто знак подтверждения стиля и качественного производства, а образ жизни, который включает в себя все аспекты деятельности. Поэтому мы полностью разделяем ценности, закрепленные в «Этическом кодексе» федерации Confindustria Ceramica (ассоциация предприятий керамической отрасли) и предусматривающие строгое соблюдение трудового законодательства. А маркировка Made in Italy и Ceramics of Italy на нашей плитке является гарантией ее качества и аутентичного итальянского дизайна.



© Ceramiche Atlas Concorde

ENJOY THE VIDEO



OVERVIEW



IMAGE GALLERY



SURFACE RANGE & TECHNICAL SPECS.



MARVEL WORLD



WE CARE



PORCELAIN TILES: A SAFE CHOICE  
ENVIRONMENTAL SUSTAINABILITY  
ETHICAL IDENTITY





Ceramiche Atlas Concorde S.p.A.  
Via Canaletto 141  
41042 Spezzano di Fiorano (MO) - Italia

Atlas Concorde USA, Inc.  
117 Seaboard Lane - Suite F170  
Franklin, TN 37067 - USA

Atlas Concorde Russia  
Business centre "Meliora Place"  
Prospekt Mira 6  
129090 Moscow - Russia

**[atlasconcorde.com](https://atlasconcorde.com)**

Copyright 2022 by Ceramiche Atlas Concorde S.p.A.  
(Spezzano di Fiorano, MO - Italy)  
September 2022